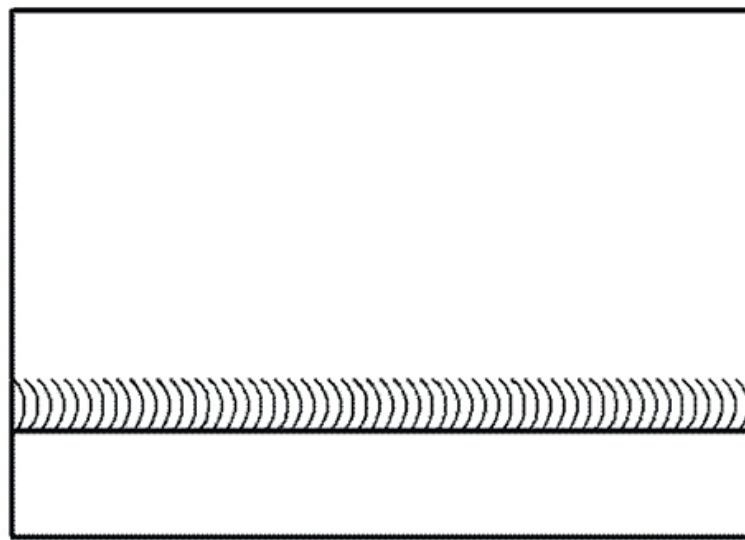
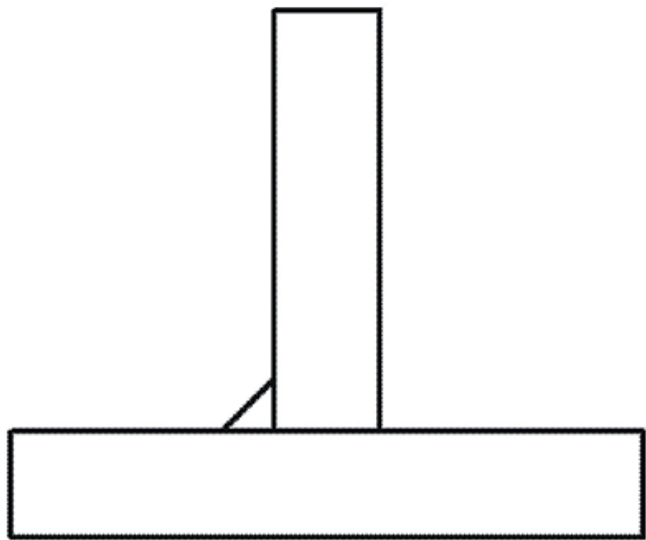
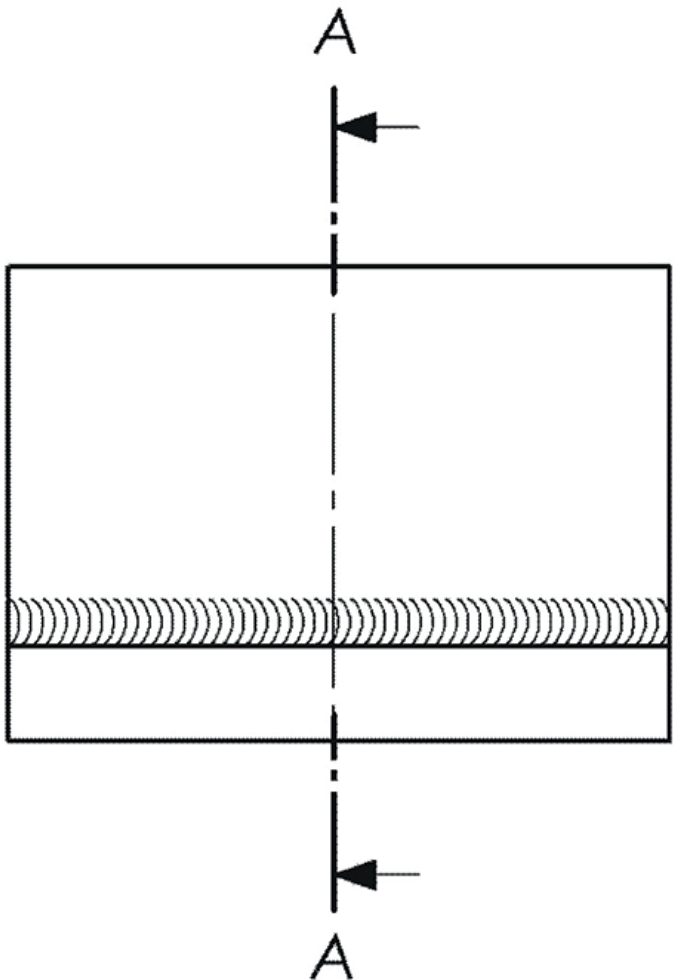
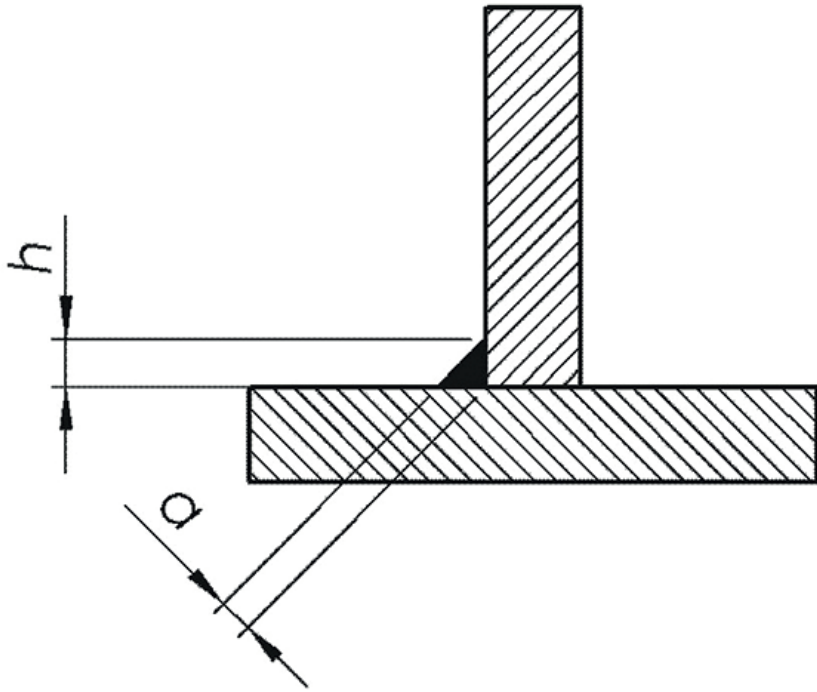


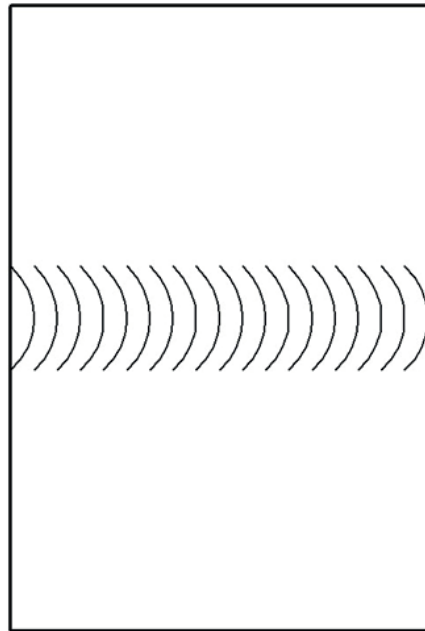
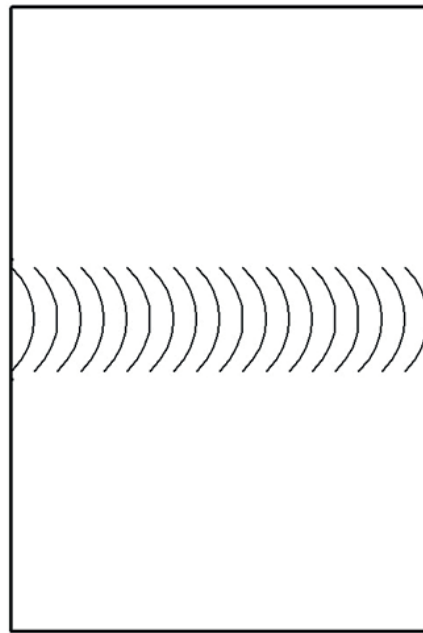
UPROSZCZENIA RYSUNKOWE

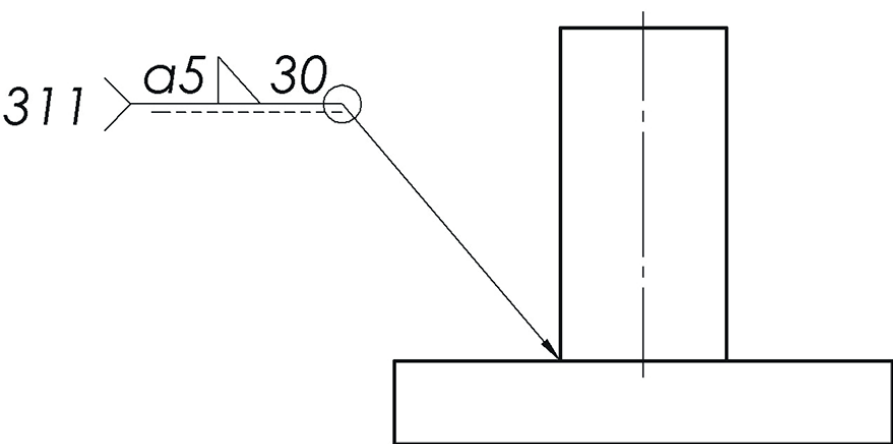
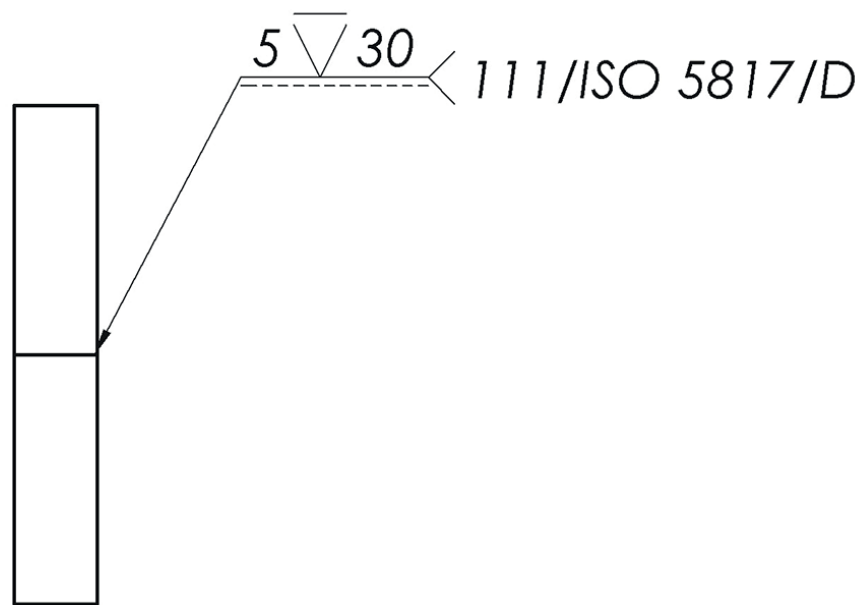
Rysowanie połączeń spawanych

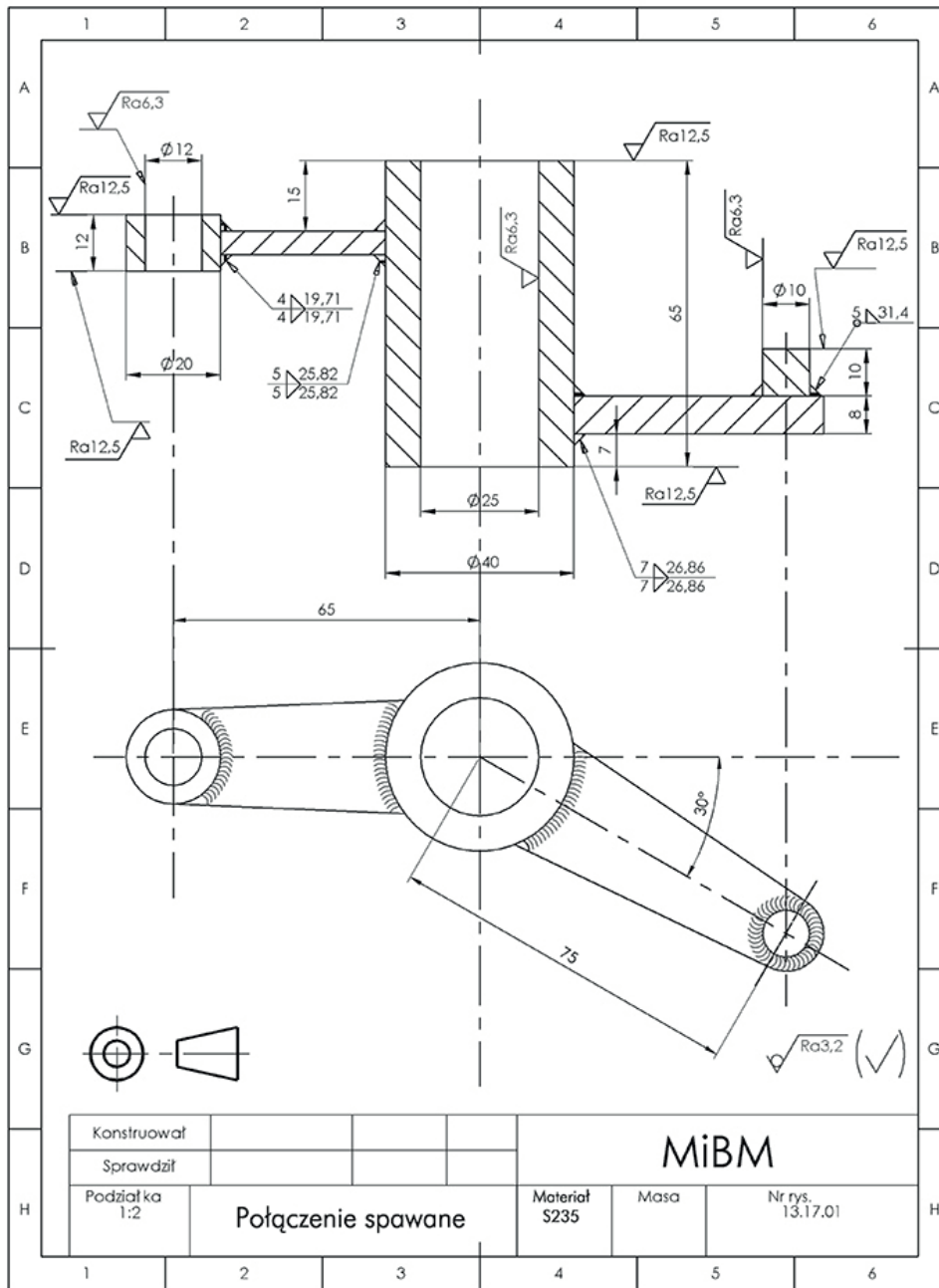


b

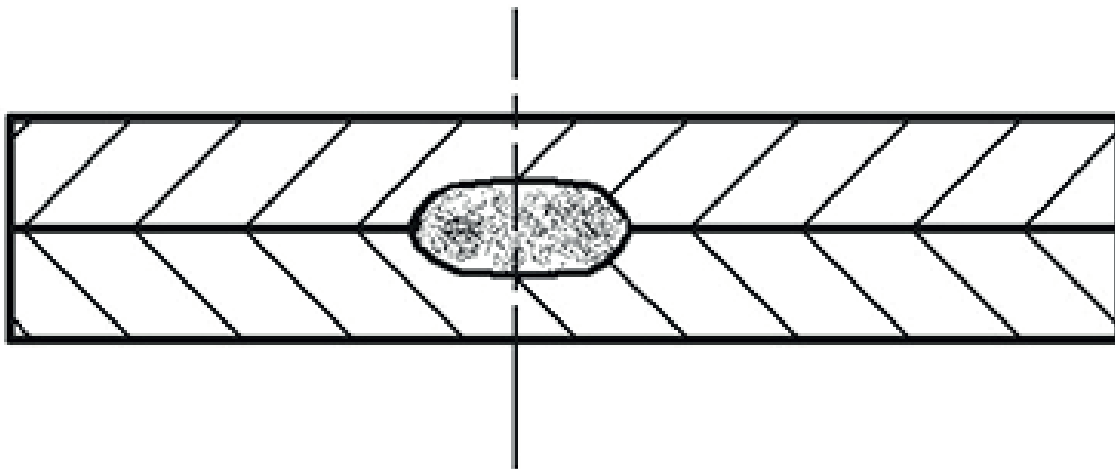





a**b**

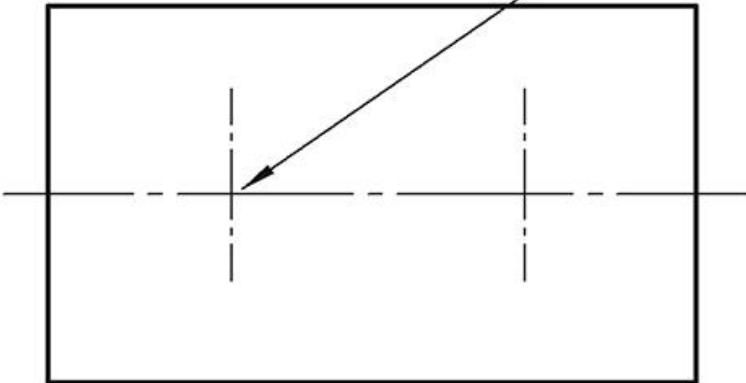


Rysowanie połączeń zgrzewanych



b

d  $nx(t)$



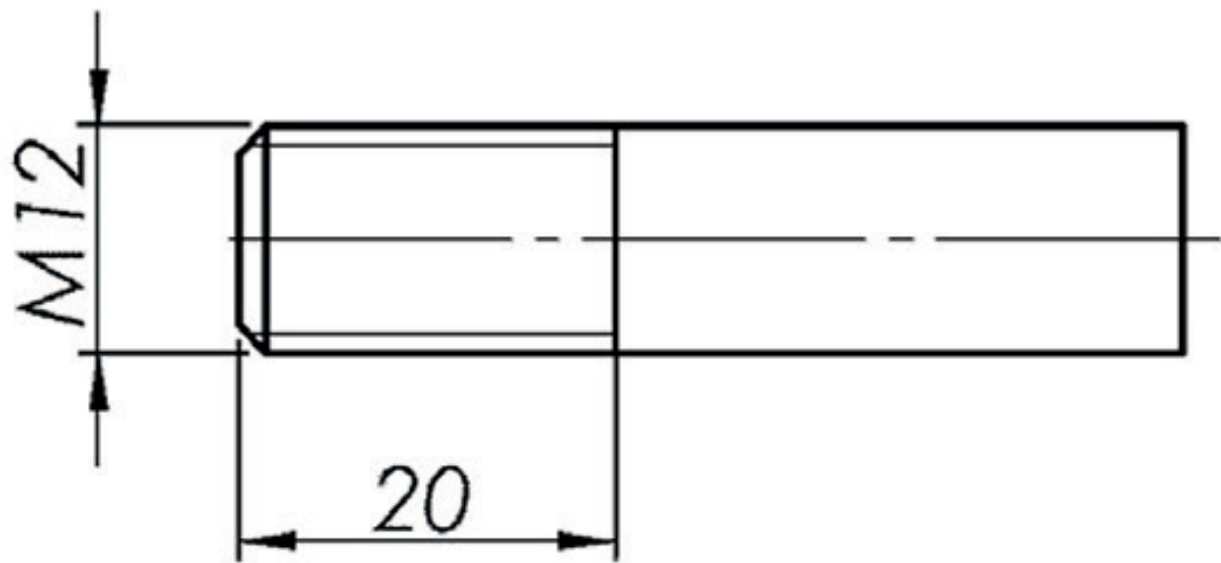
d - średnica

 - znak zgrzeiny punktowej

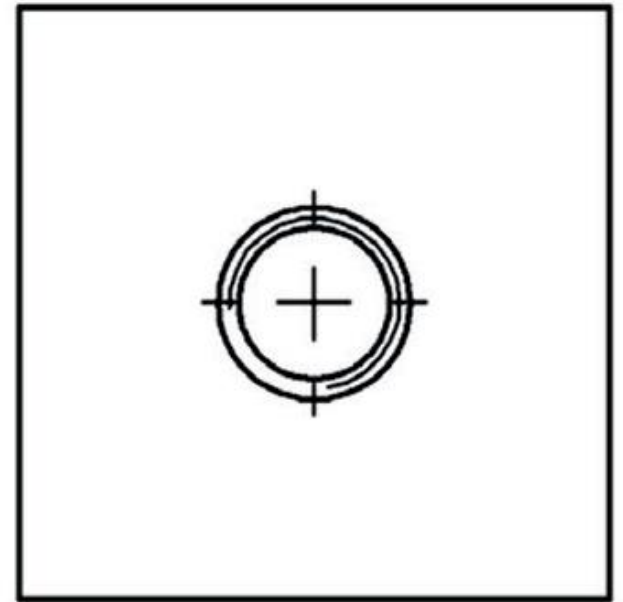
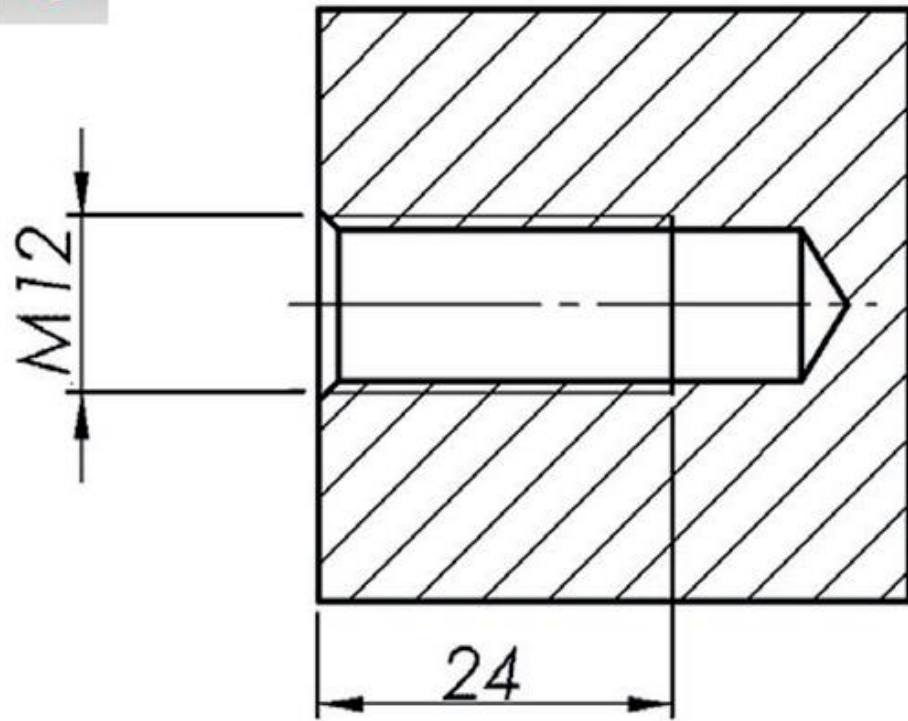
n - liczba zgrzein punktowych

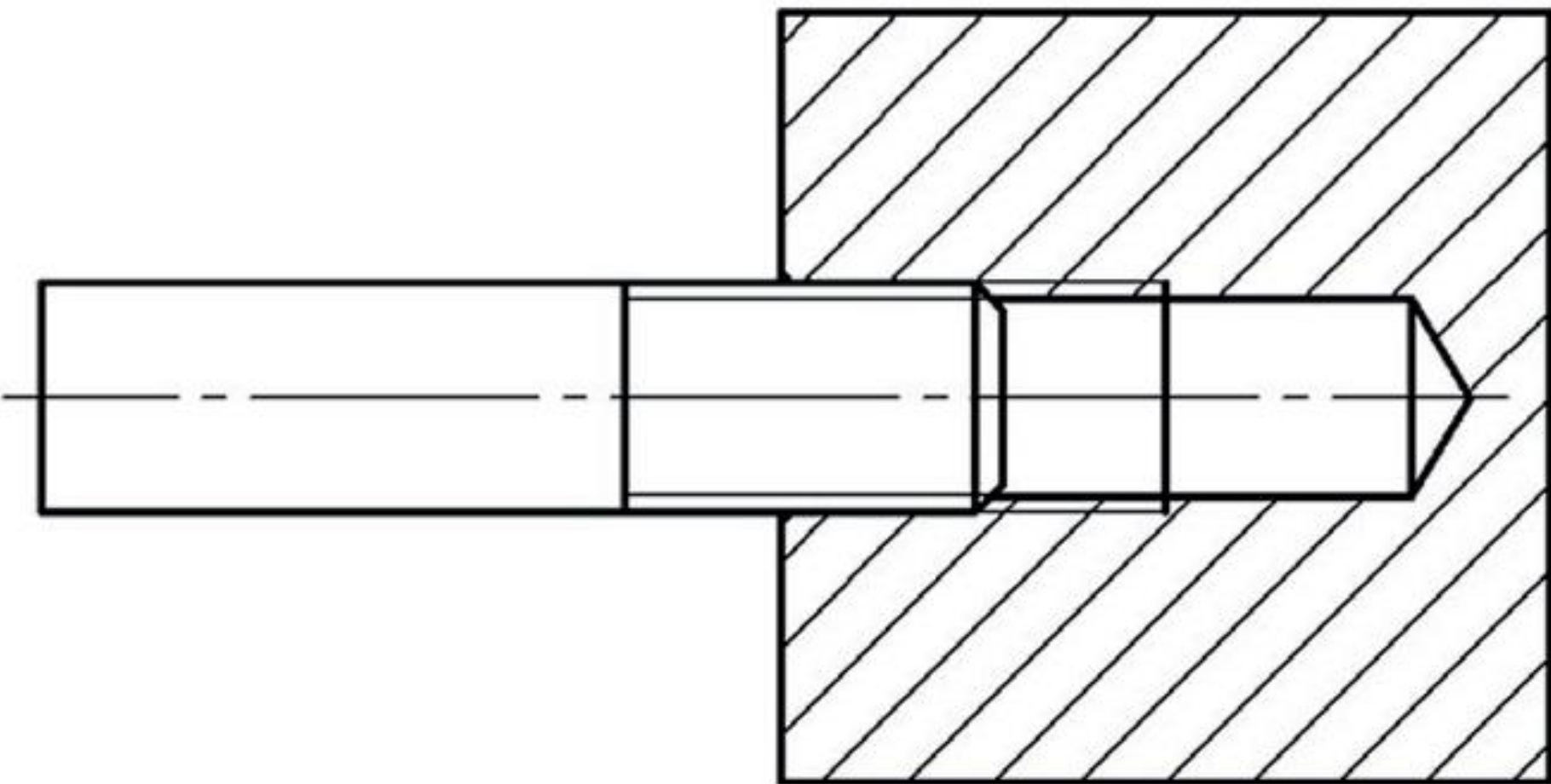
(t) - odległość między środkami

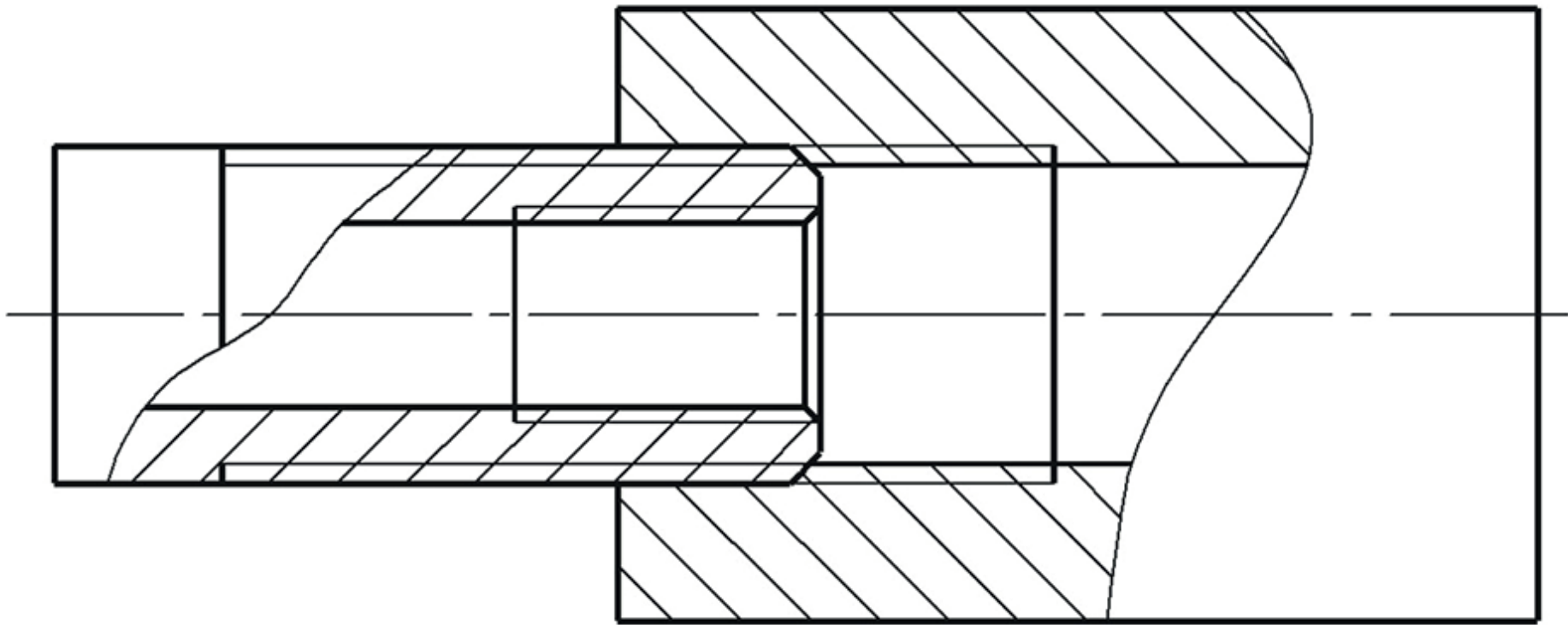
Rysowanie połączeń gwintowych

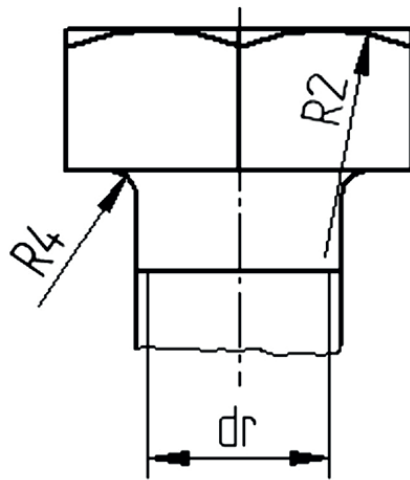
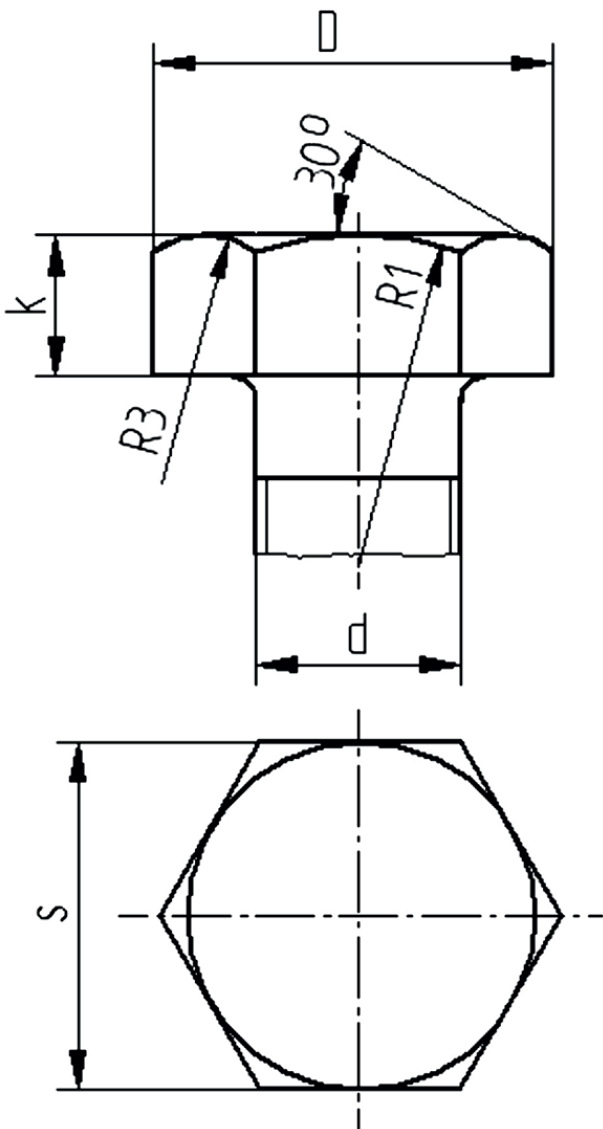


b





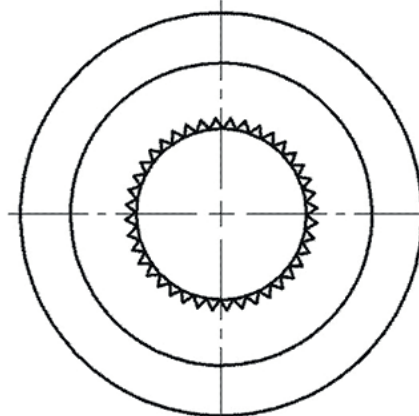
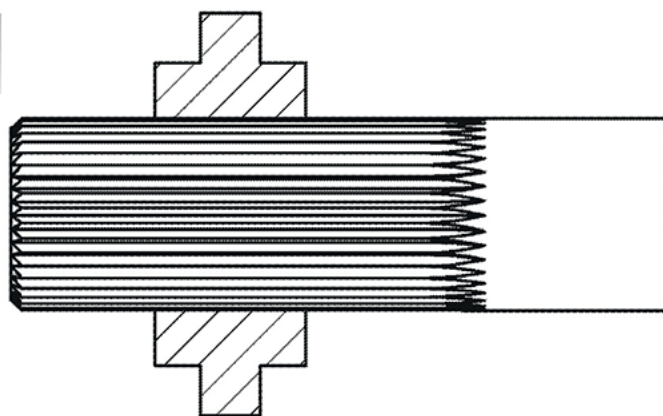
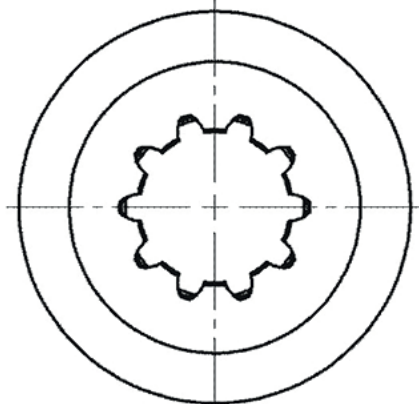
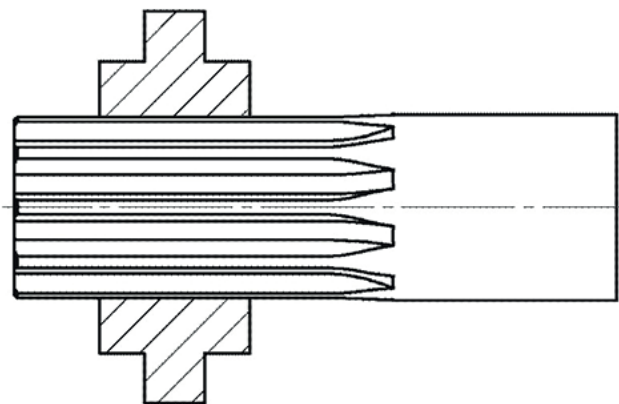
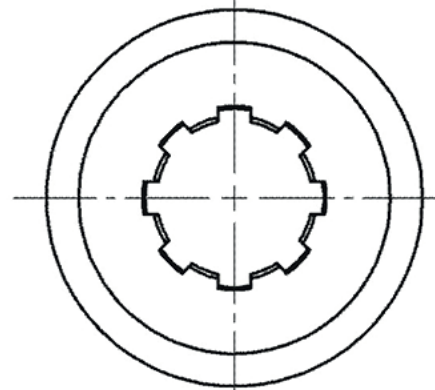
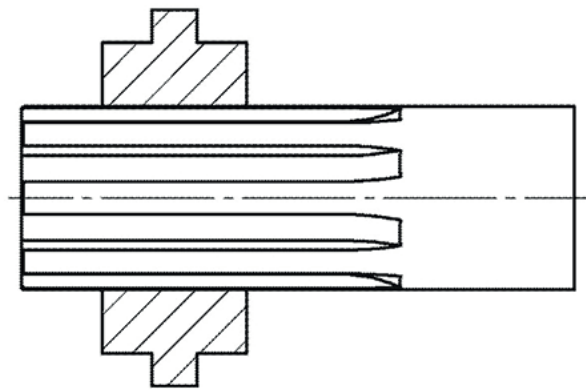




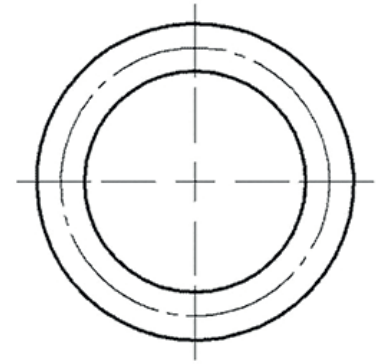
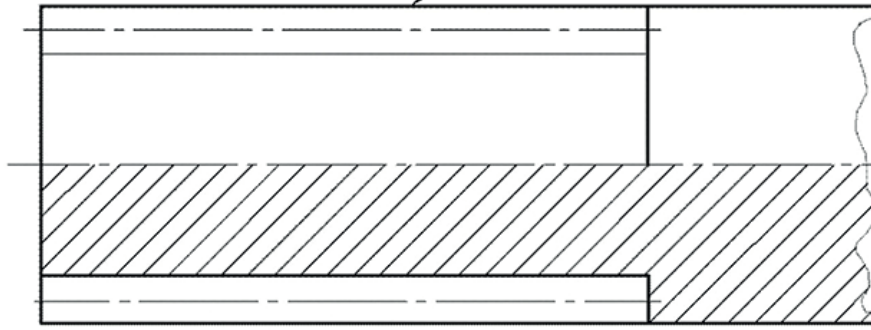
Rys. 1.80

Zależności geometryczne między wymiarami łba śruby
 d – średnica śruby, $d_r = 0,8d$ – średnica rdzenia śruby, $D = 2d$,
 $s = 1,75D$ – wymiar pod klucz, $k = 0,7d$, $R1 = 1,5d$, $R2 = d$,
 $R3 = 0,32d$, $R4$ – wartość z tablic

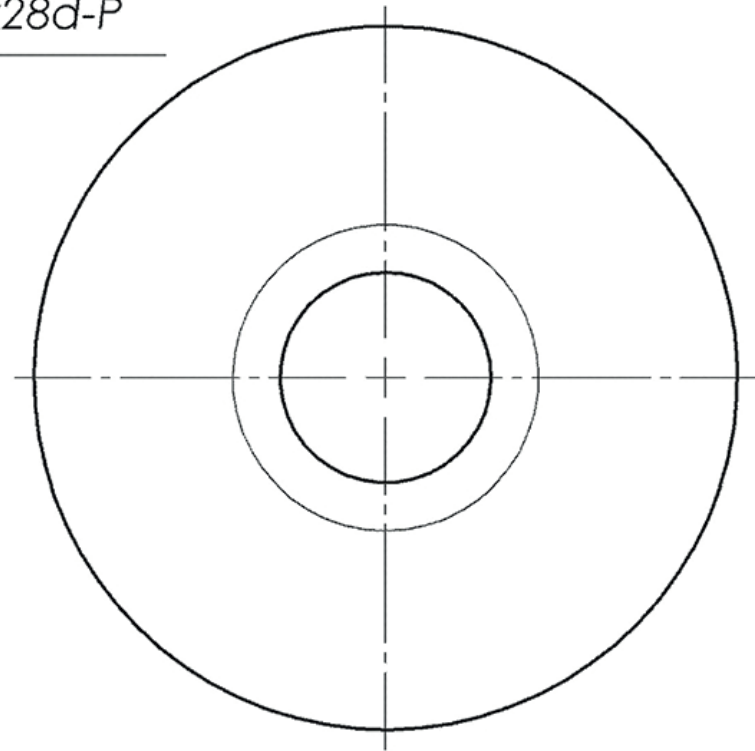
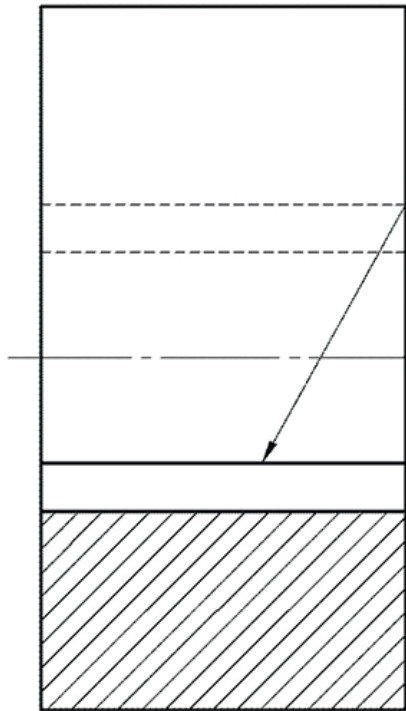
Rysowanie połączeń wielowypustowych



PN - 68/M-85014-W-30D

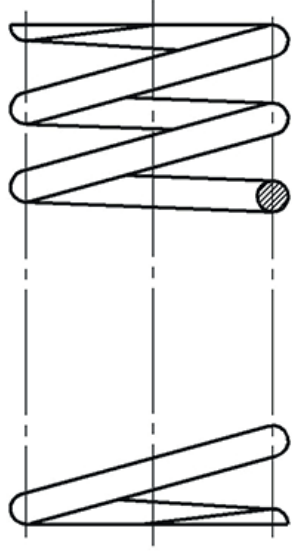


PN - ISO-14-16x28d-P

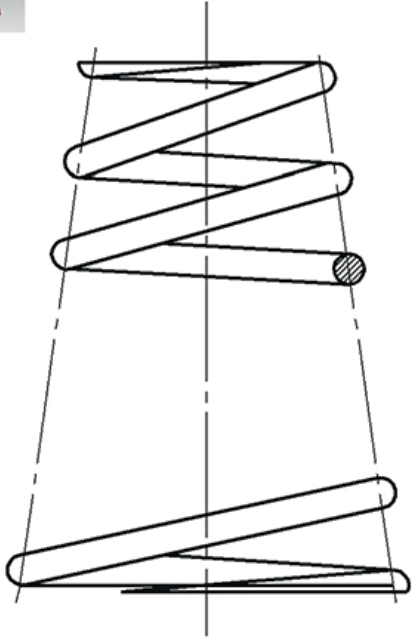


Rysowanie sprężyn

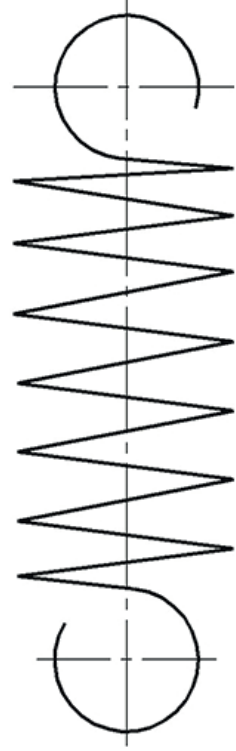
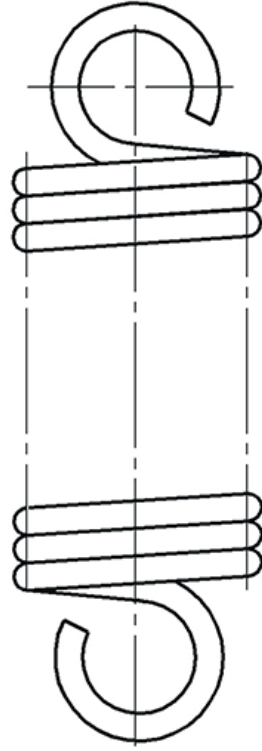
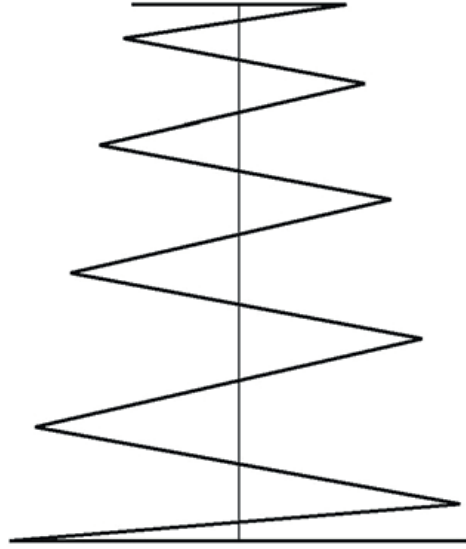
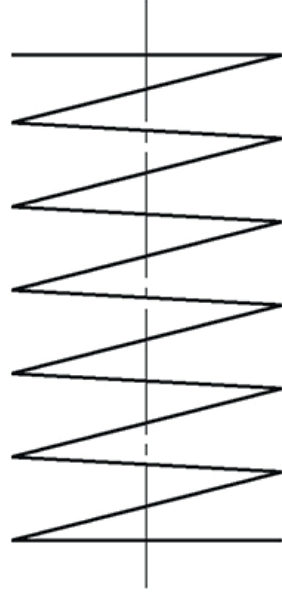
a

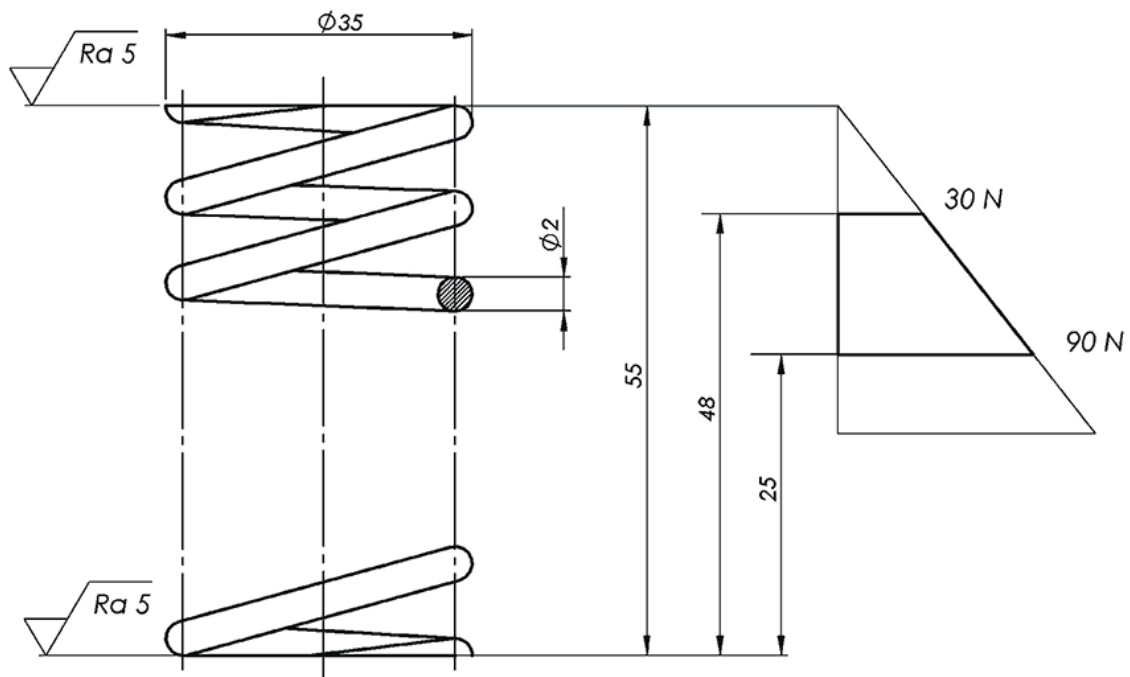


c



b





Liczba zwojów czynnych	8
Całkowita liczba zwojów	10
Kierunek zwojów	prawy
Twardość	HRC 38+/-2
Średnica trzpienia kontrolnego	30,8 mm
Długość drutu w rozwinięciu	1095 mm
Pokrycie	ocynk



Tabliczka

