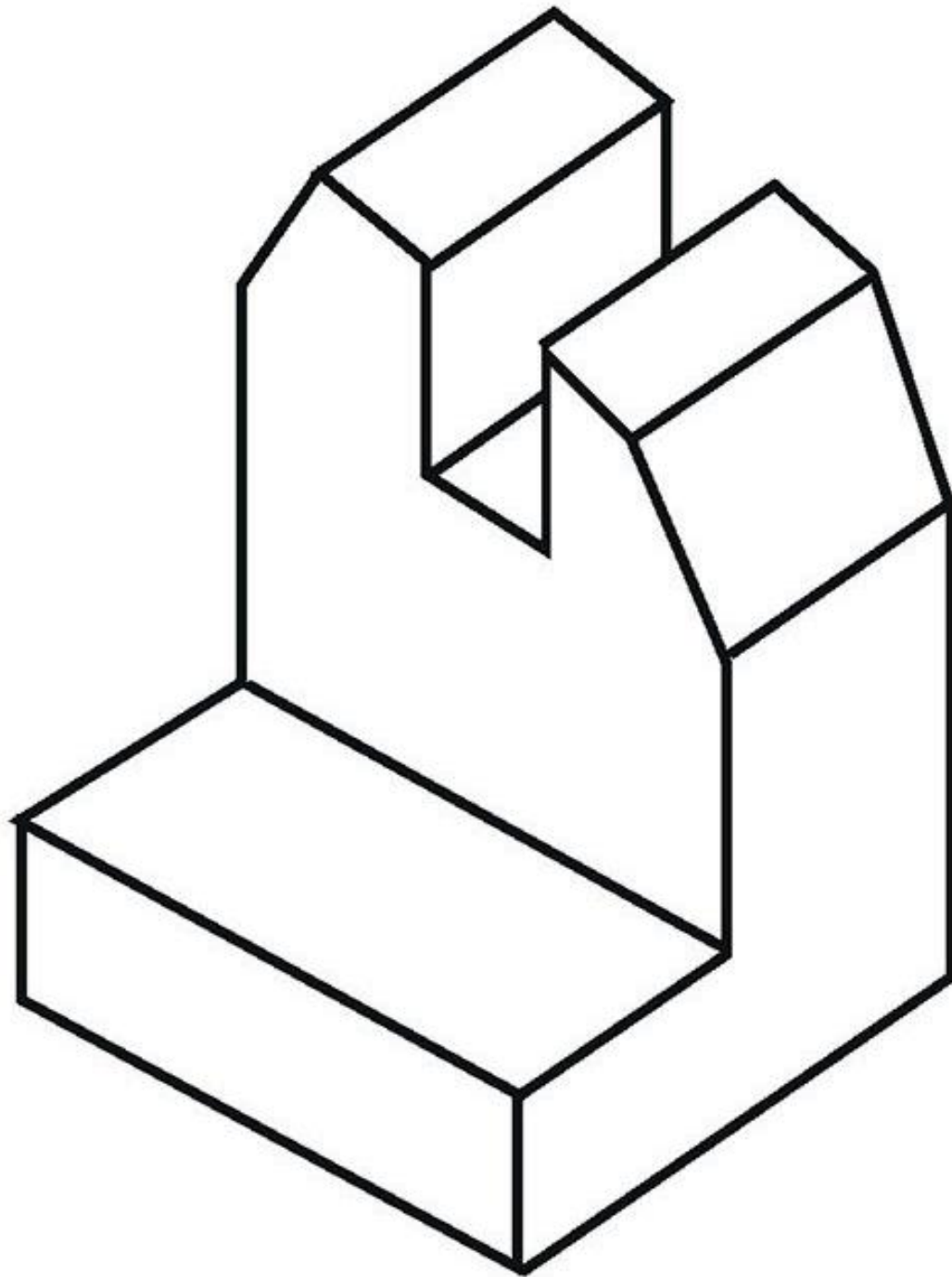
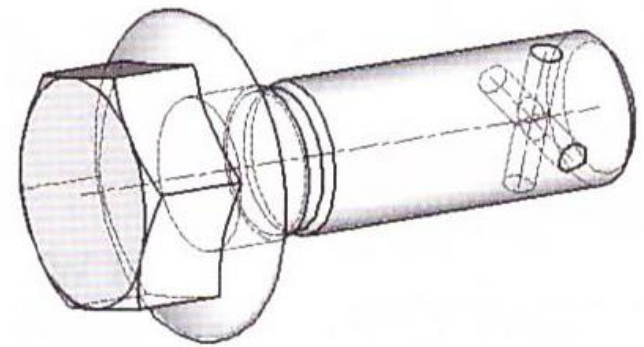
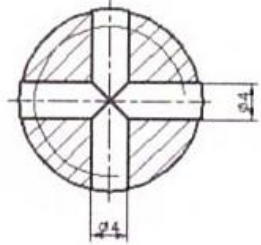
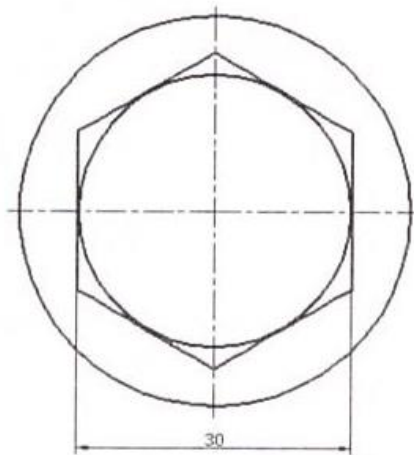
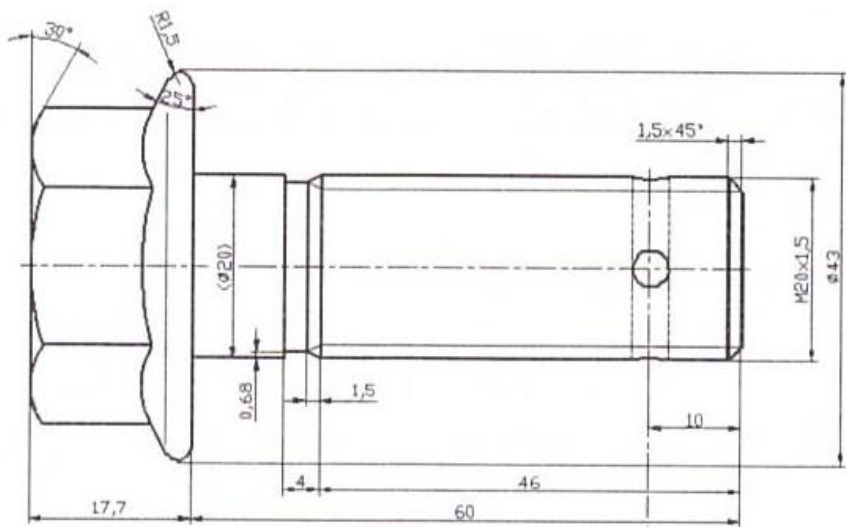



# RZUTOWANIE PROSTOKĄTNE



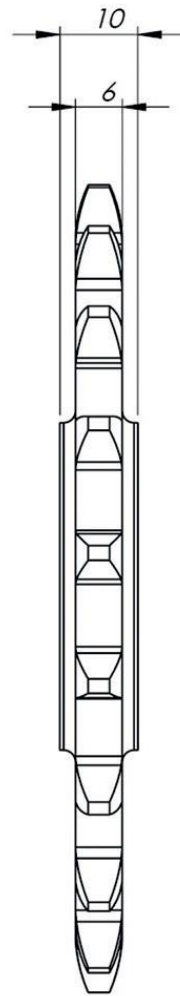
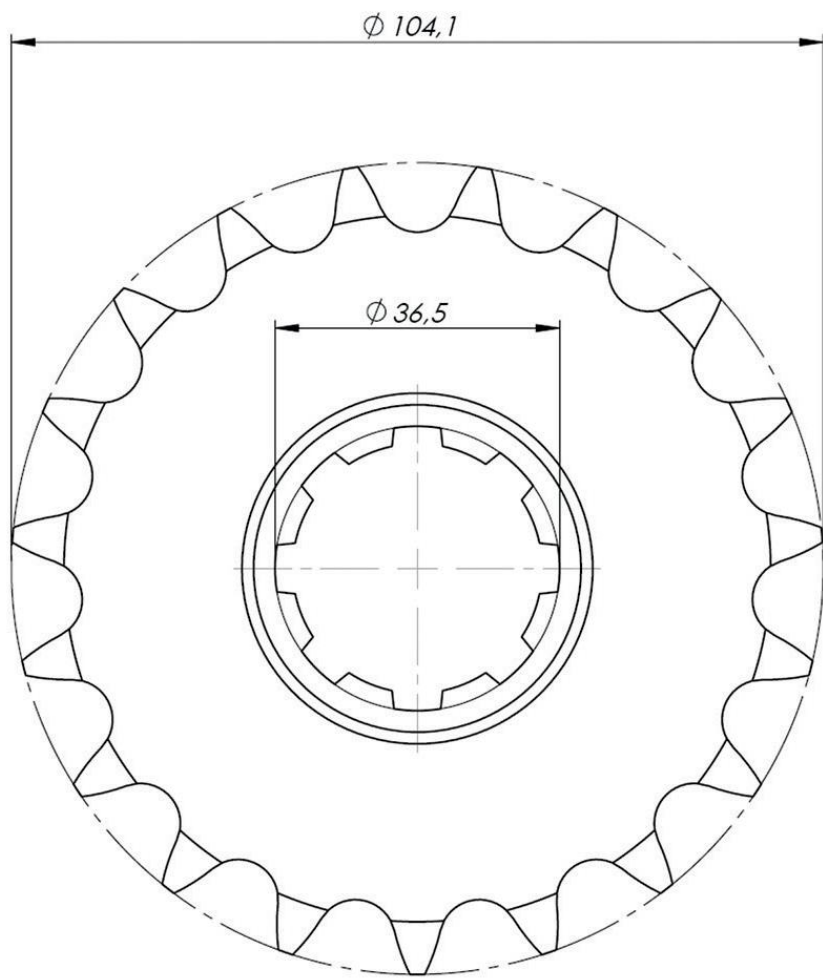


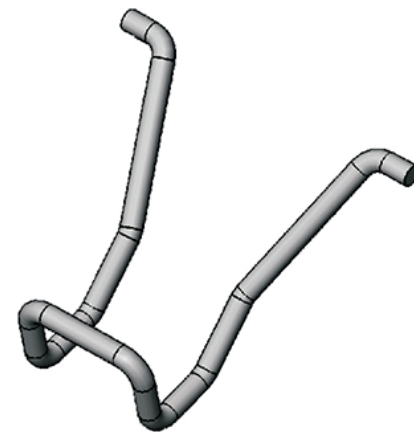
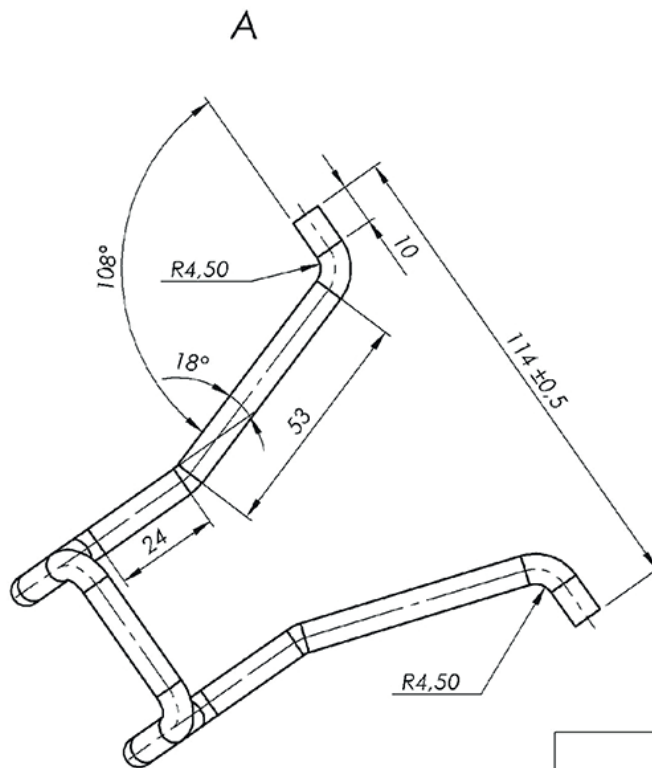
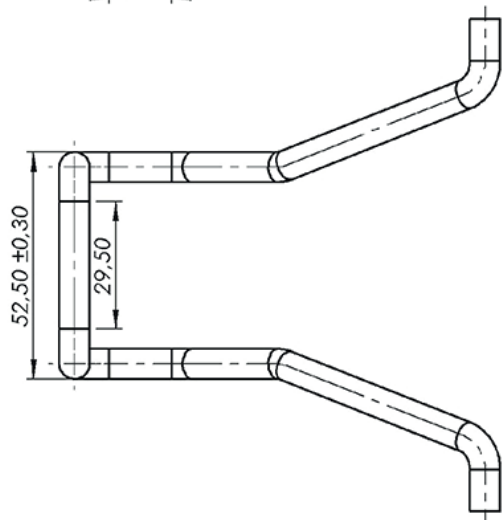
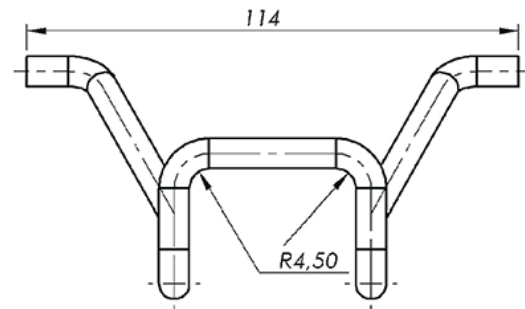
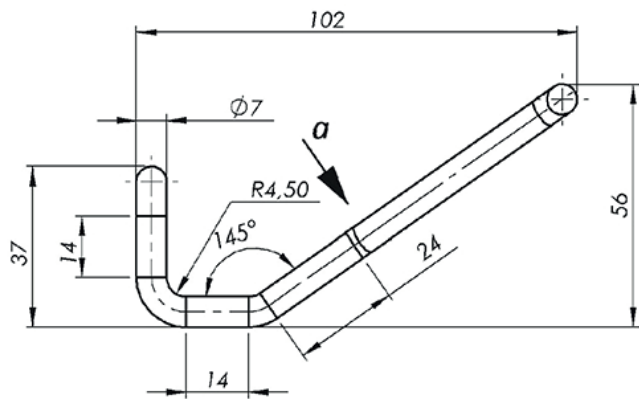
UWAGA! Rysunek niekompletny na potrzeby dydaktyki.

Projektował: Nazwisko I.	00.00.00	Podziak:	2:1	Materiał:	35S20	Masa k.gj:	0,025
Rysował: Nazwisko I.	00.00.00	Podpis:		Format:	A3	Arkusz:	1/1
Sprawił: Nazwisko I.	00.00.00						
Zaakceptował: Nazwisko I.	00.00.00						

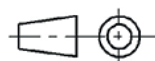

 Politechnika Rzeszowska  
 im. Ignacego Łukasiewicza  
 Wydział Budowy Maszyn i Lotnictwa  
 Katedra Konstrukcji Maszyn

**Śruba z kołnierzem**  
 Numer rysunku: Z-04-R-01

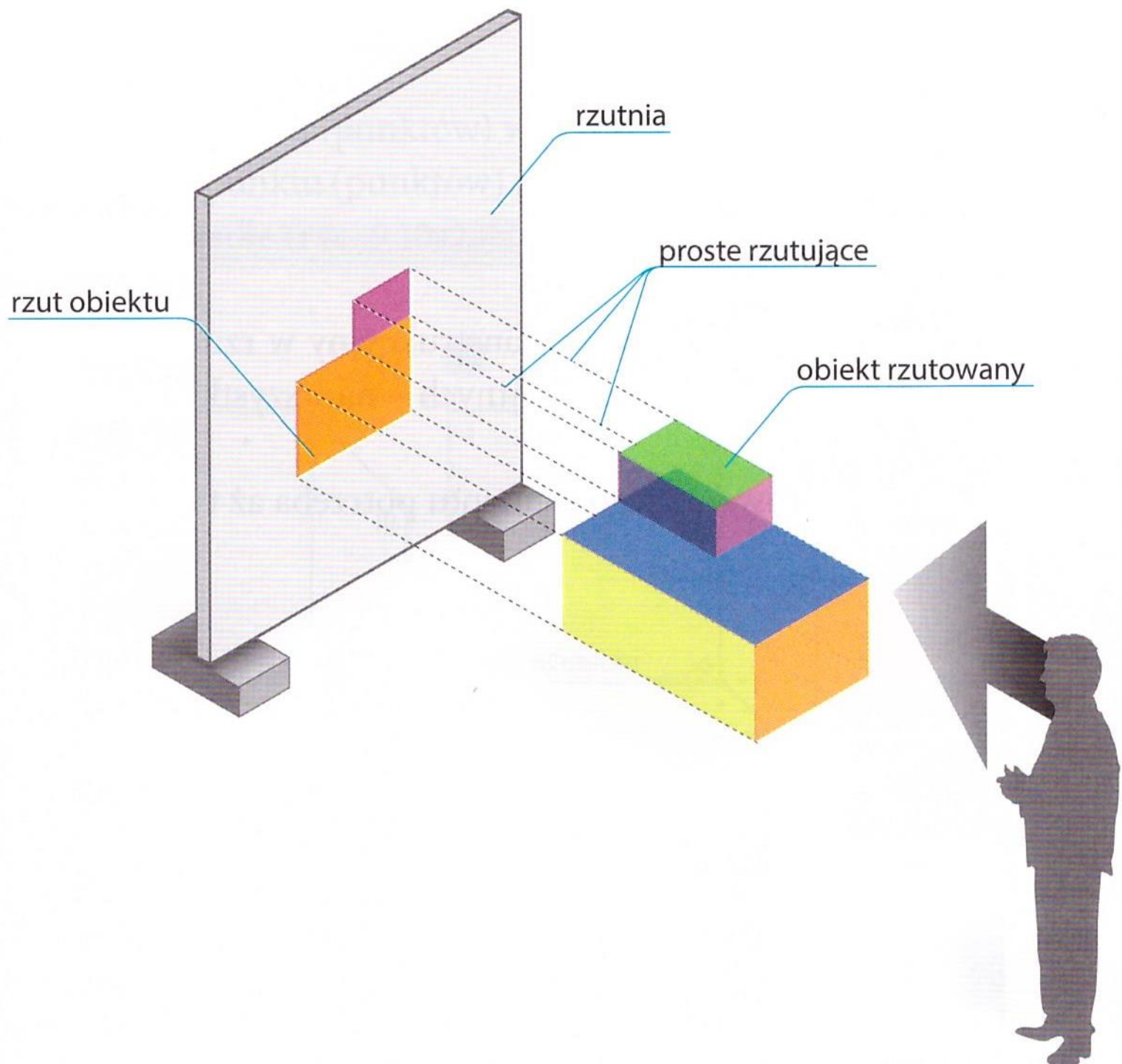




8 szt na wyrób

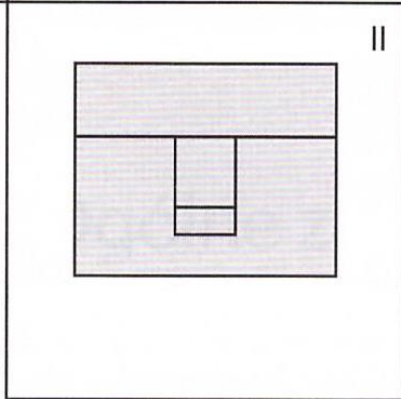
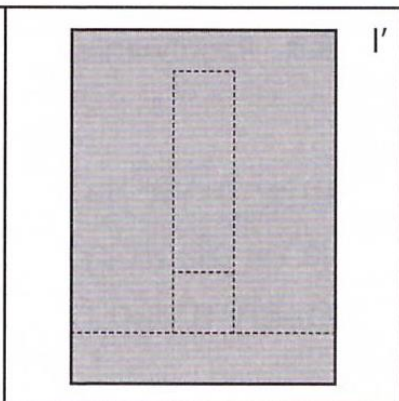
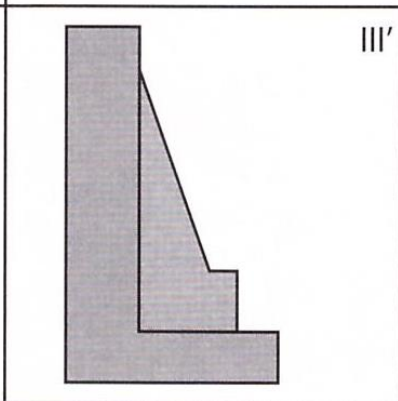
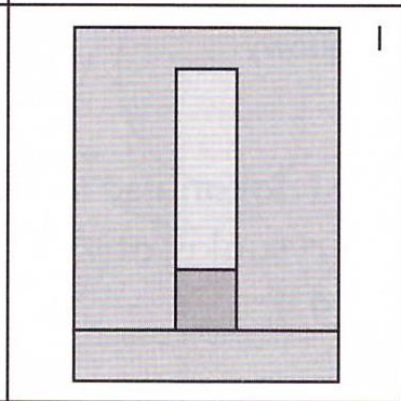
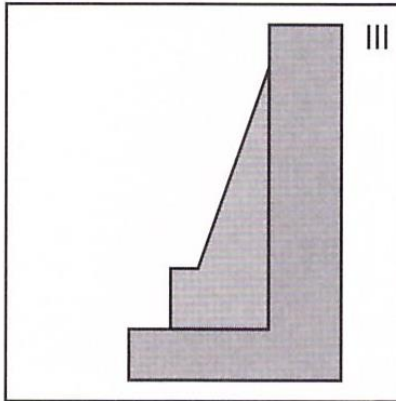
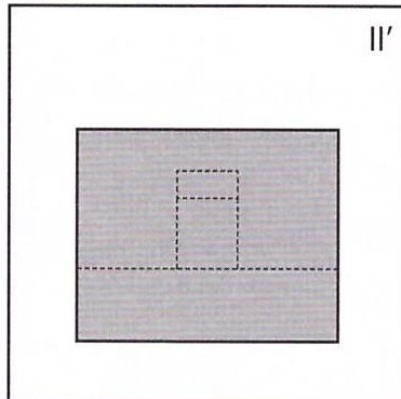
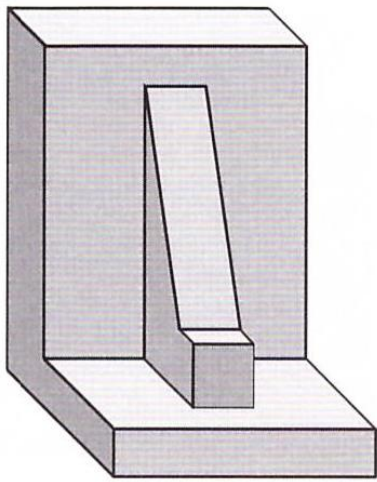


Tabliczka

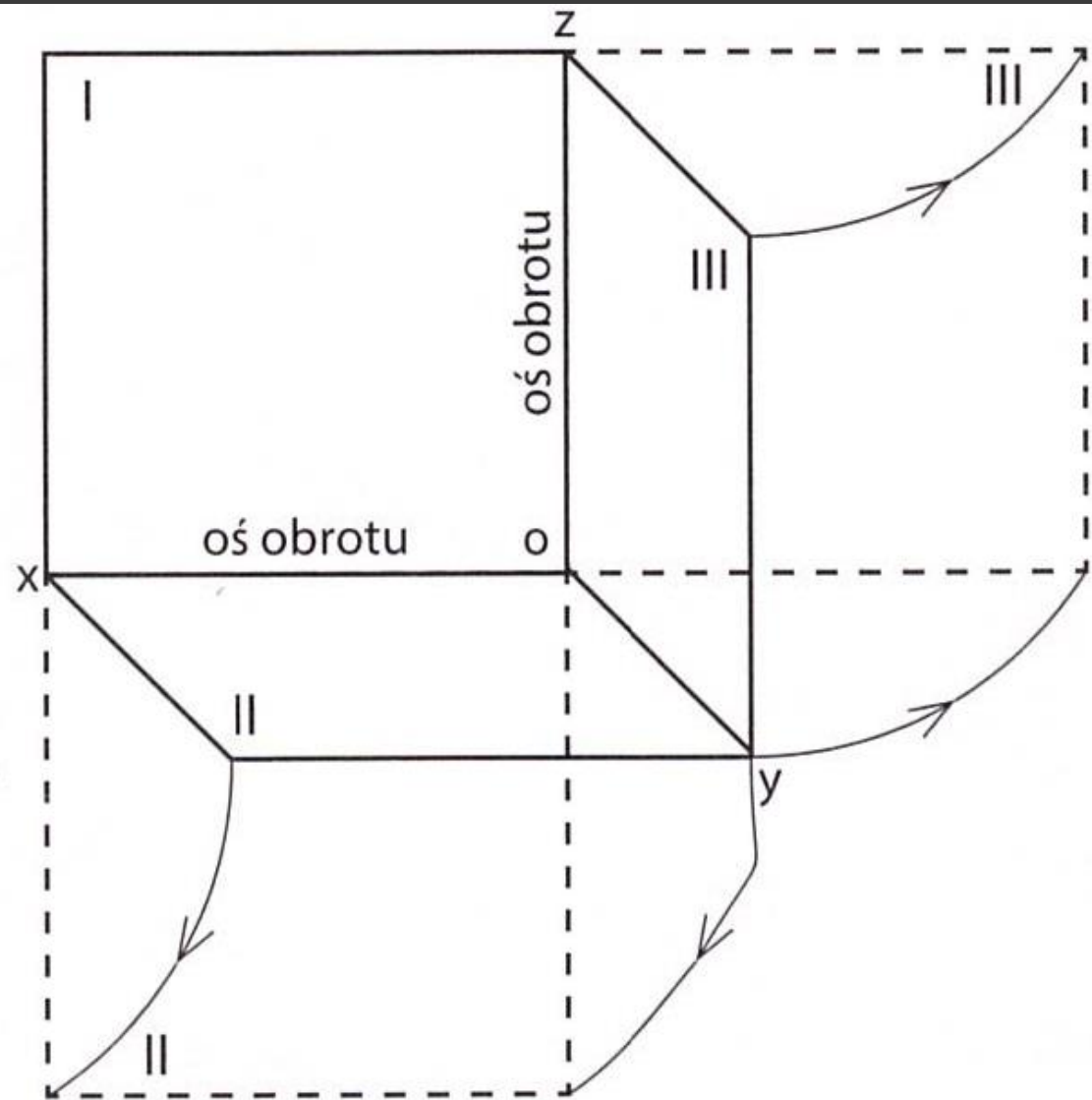
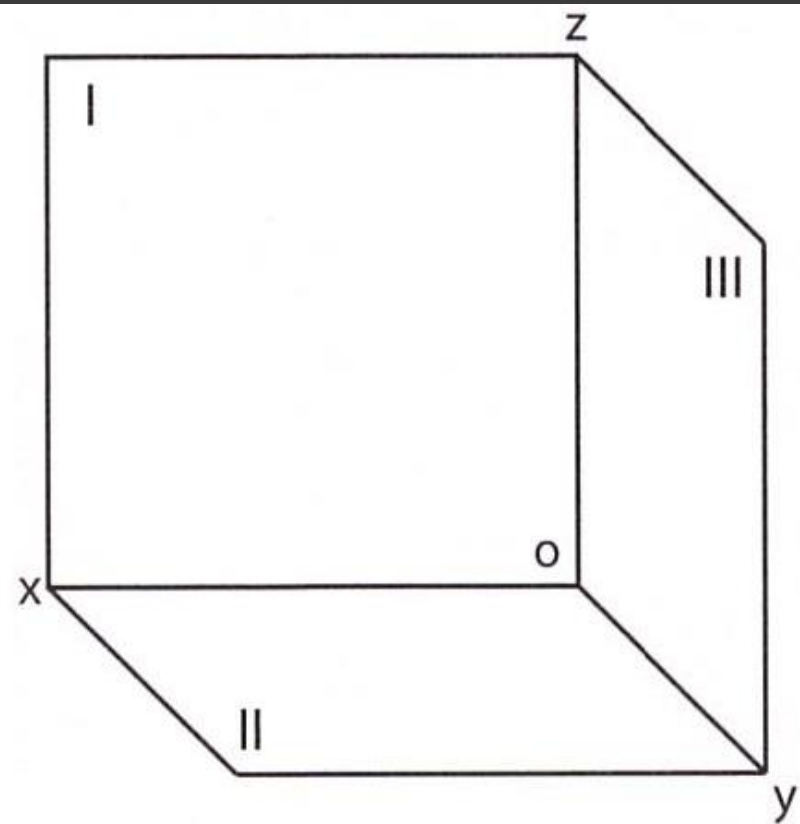


# Układ rzutni







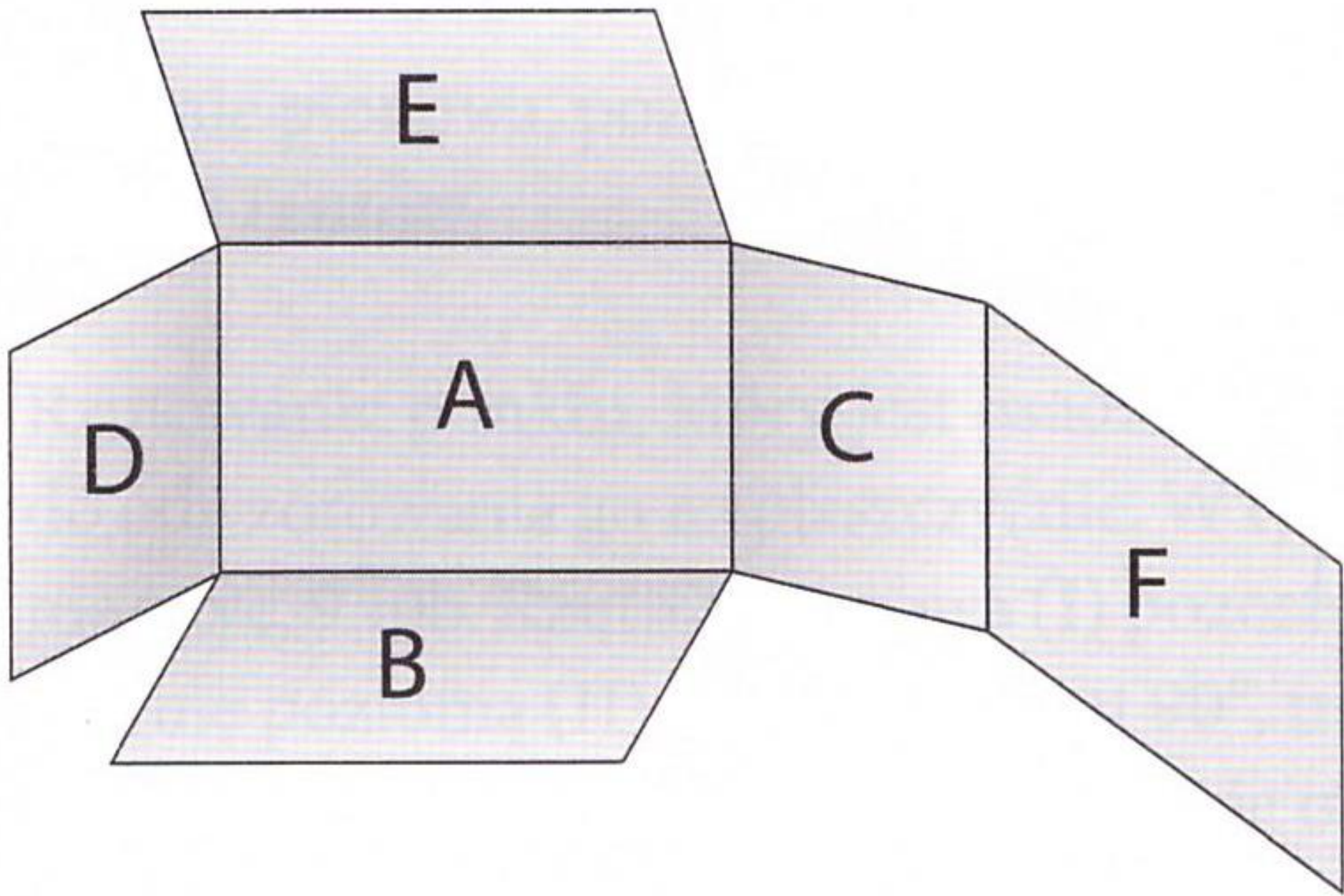


płaszczyzna I

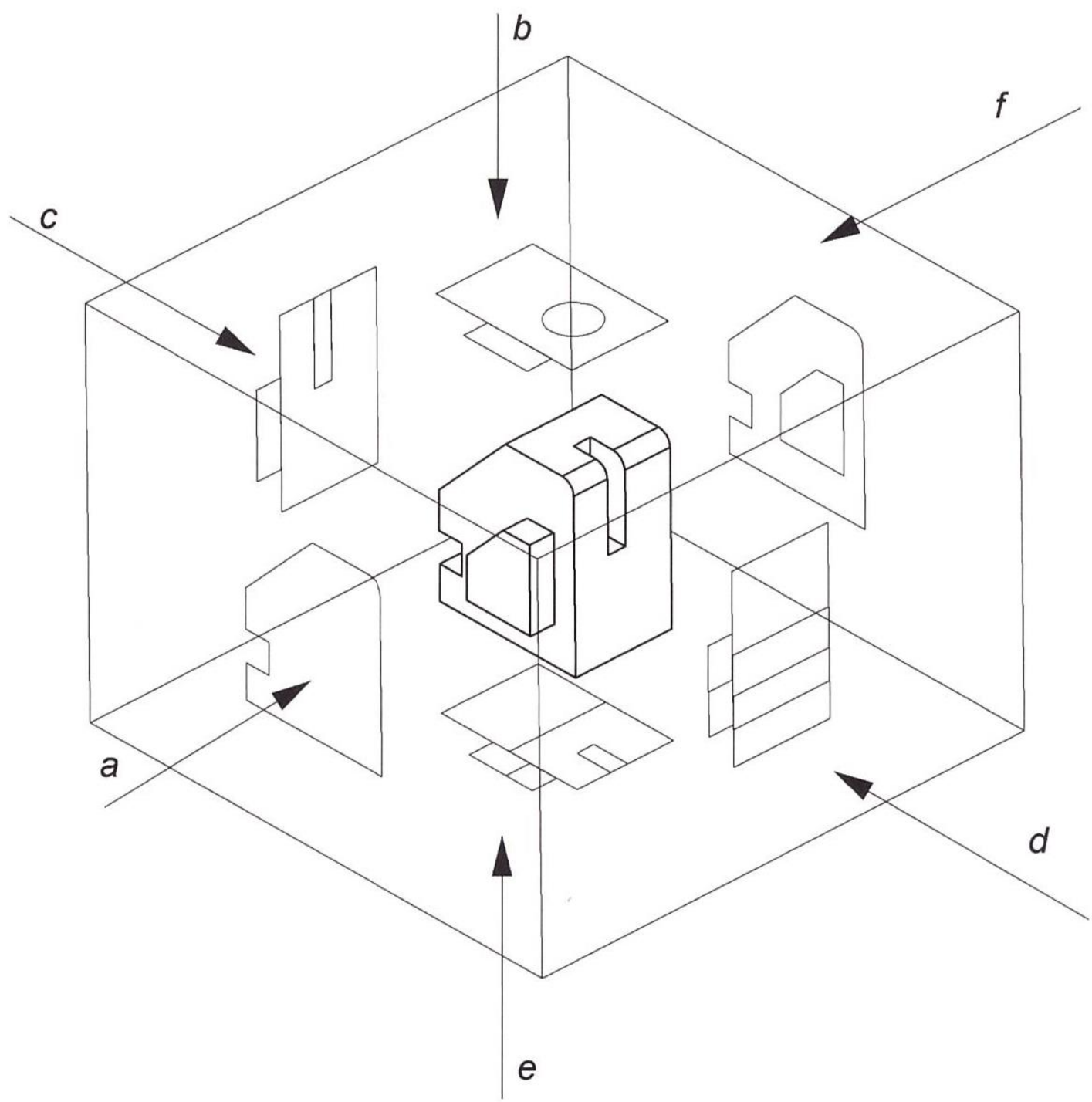
płaszczyzna III

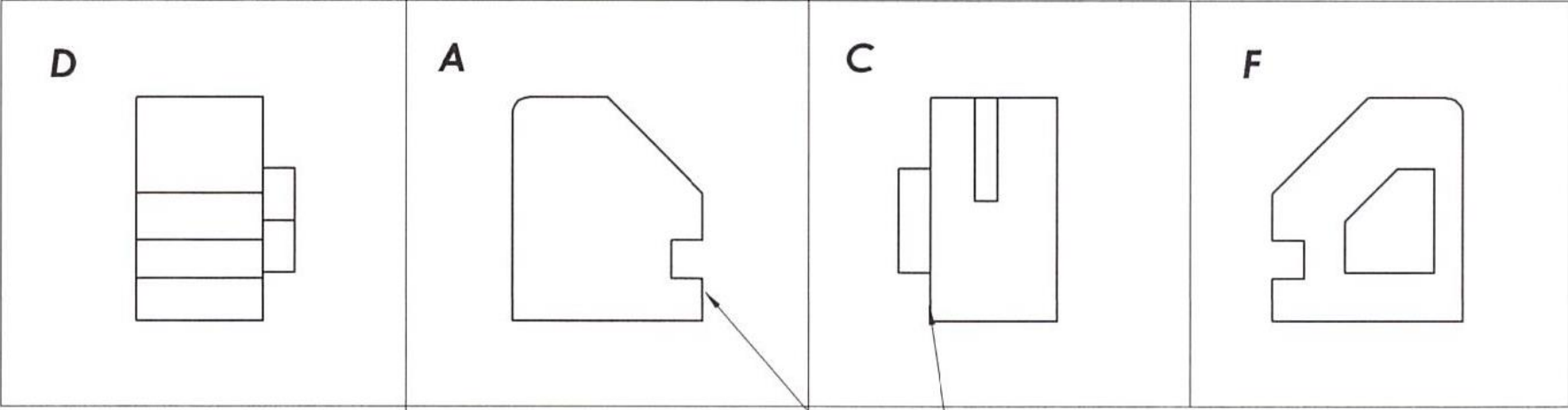
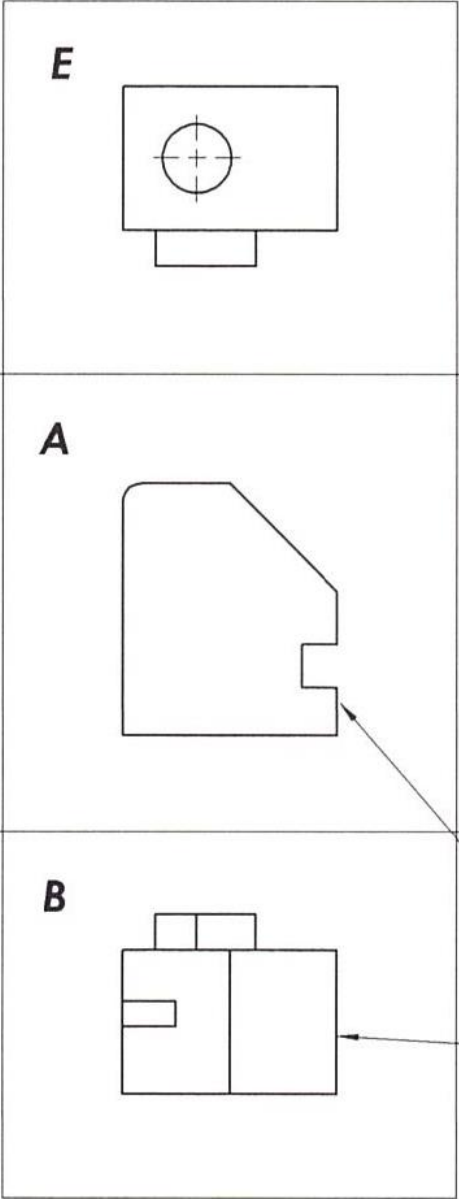
o

płaszczyzna II

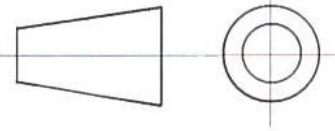


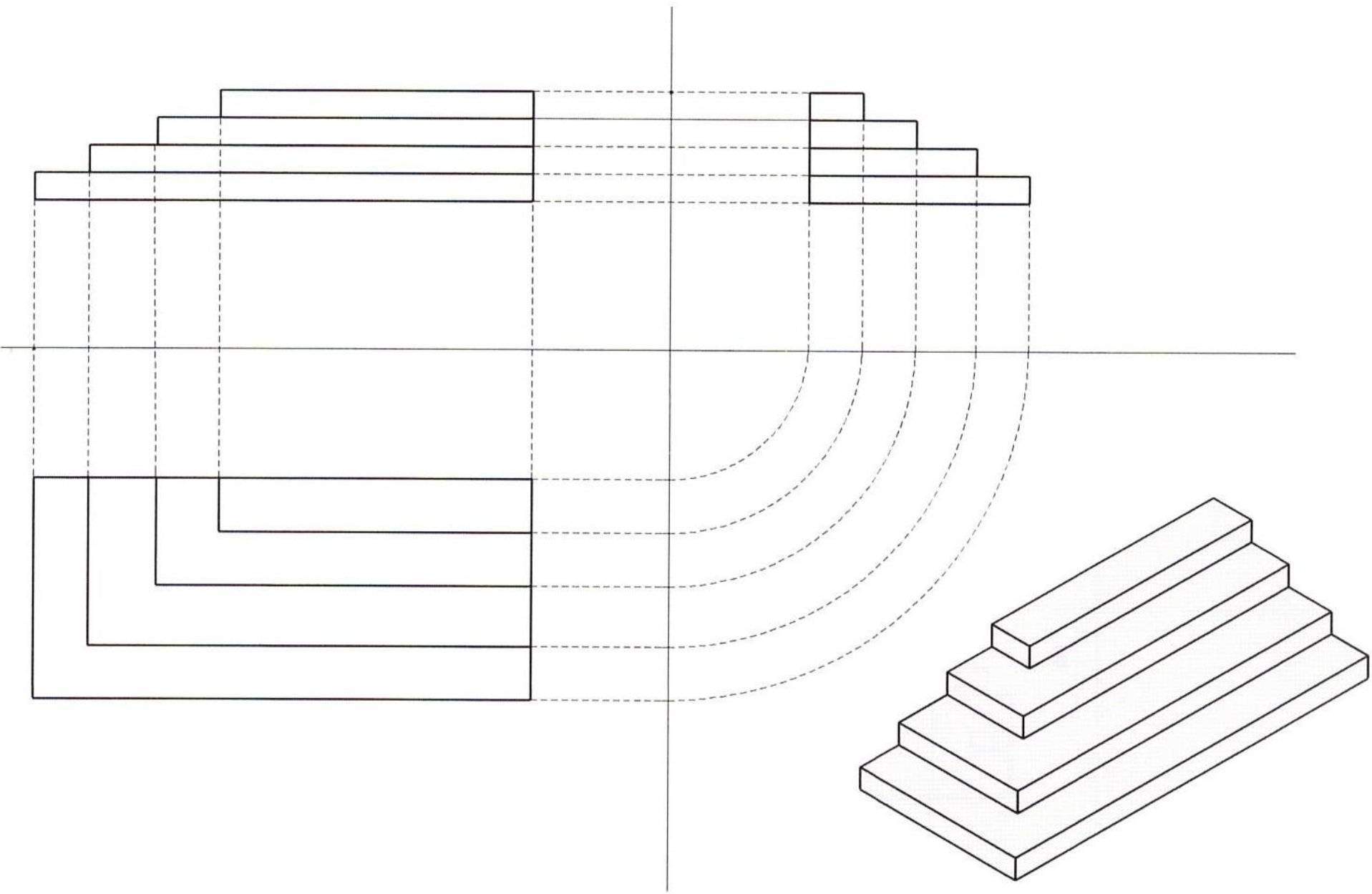
# Rzutowanie metodą europejską





Podstawowy układ rzutów

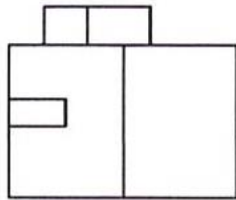




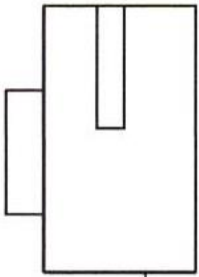


# Rzutowanie metoda amerykańską

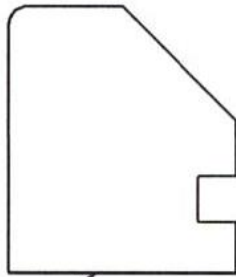
**B**



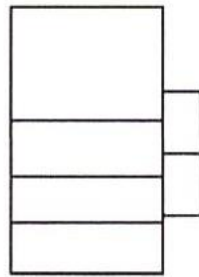
**C**



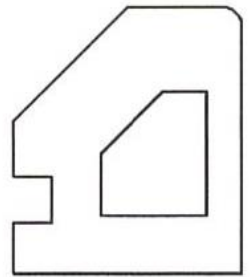
**A**



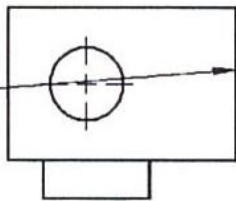
**D**



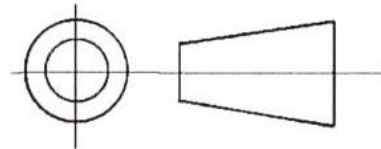
**F**



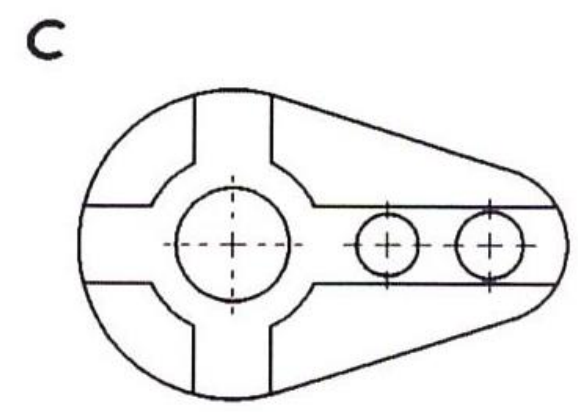
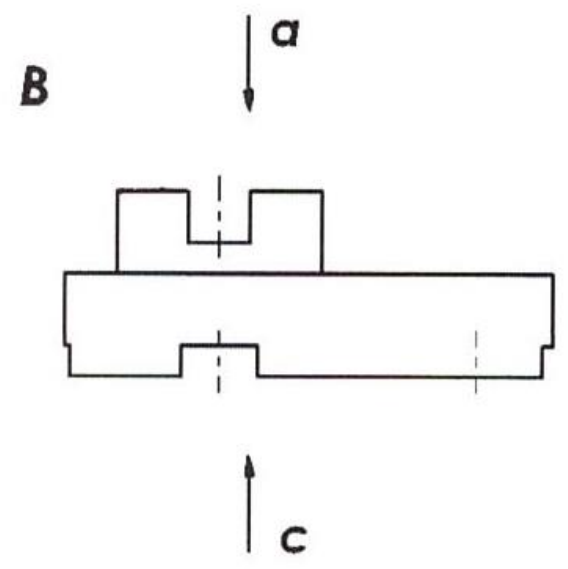
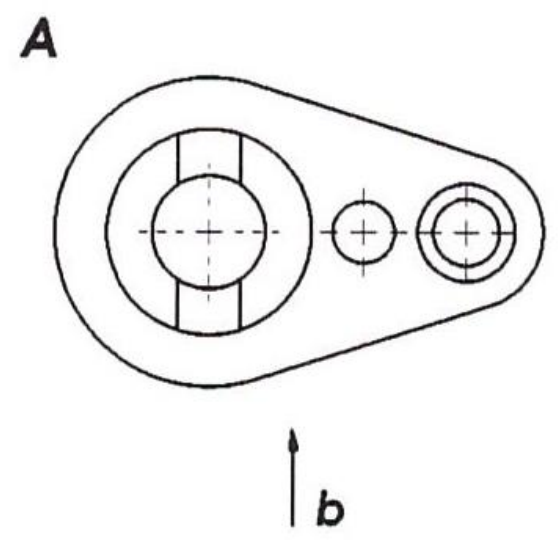
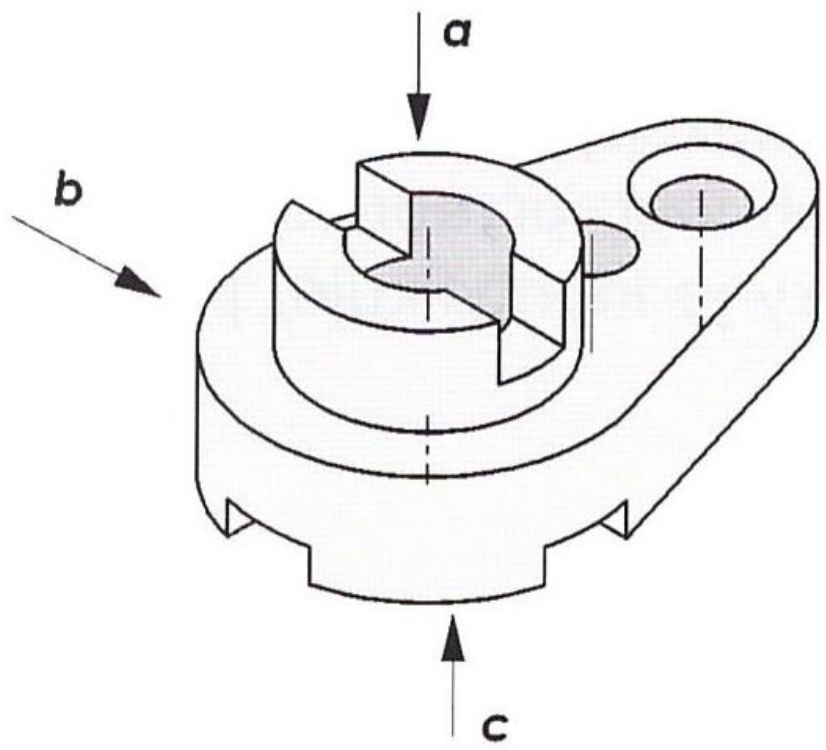
**E**

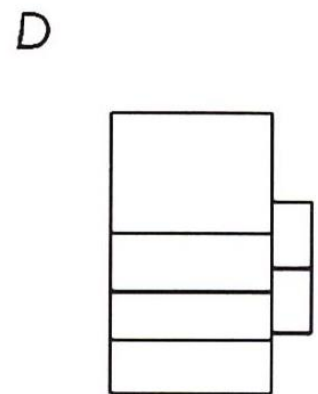
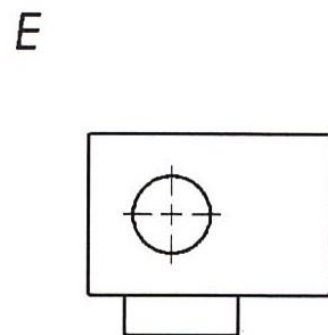
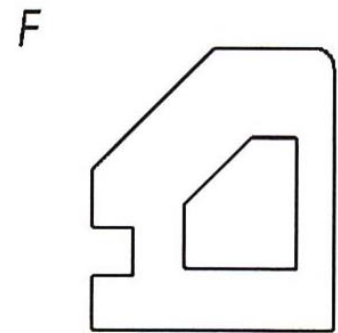
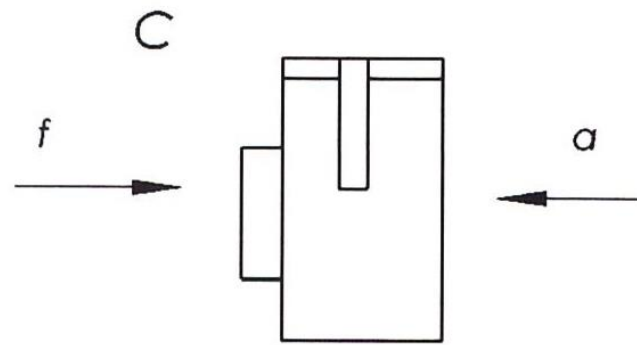
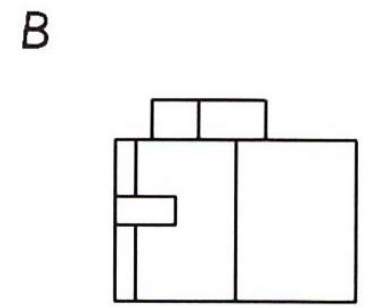
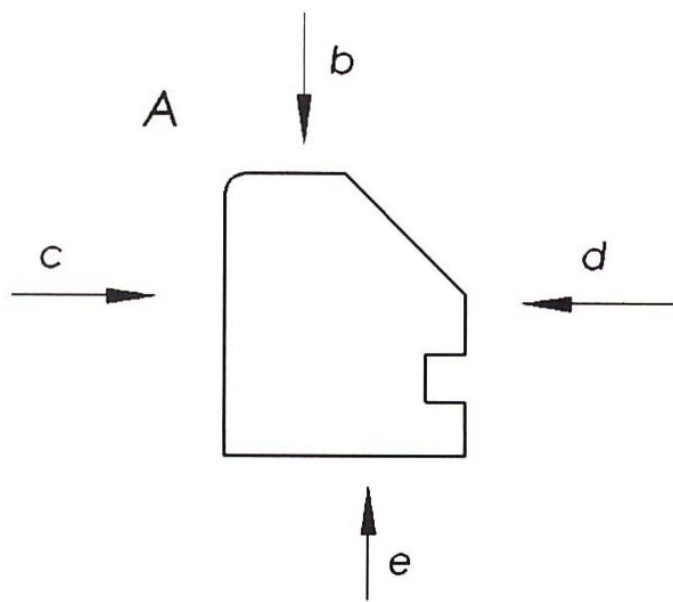


*Podstawowy  
układ rzutów*

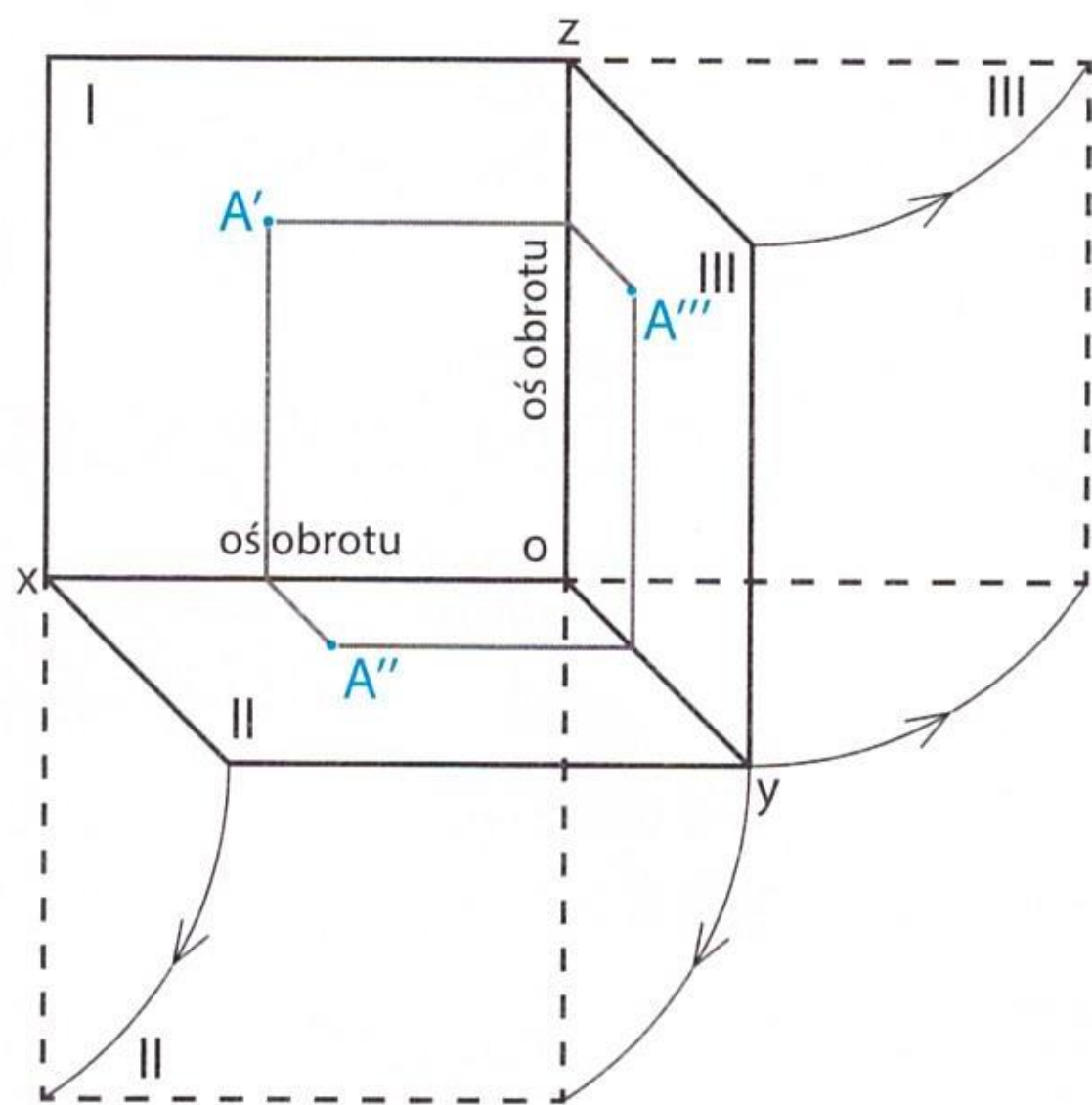
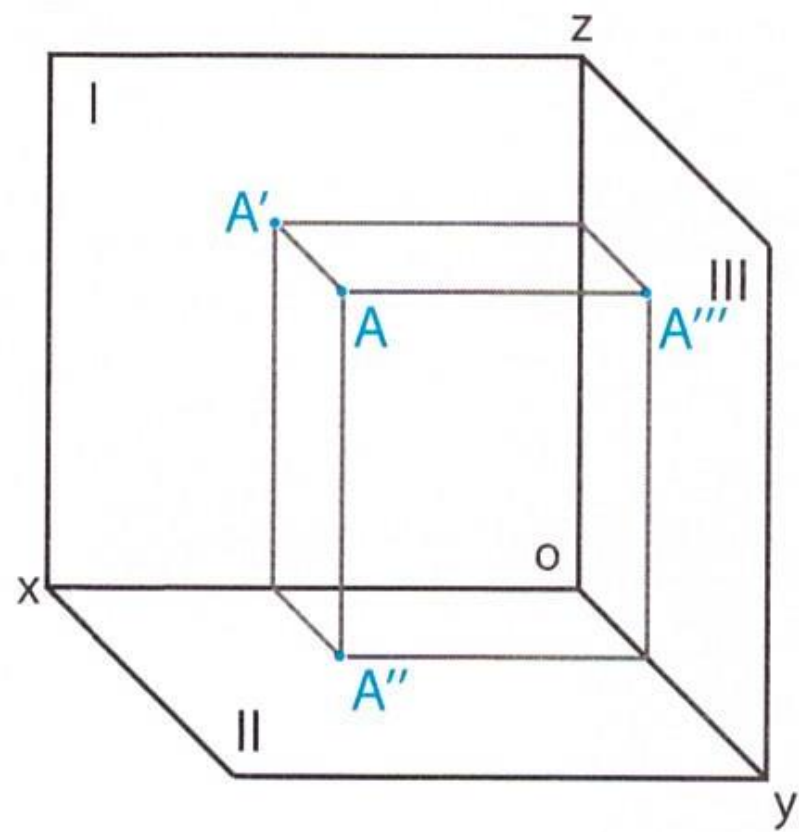


# Rzutowanie identyfikowane strzałkami

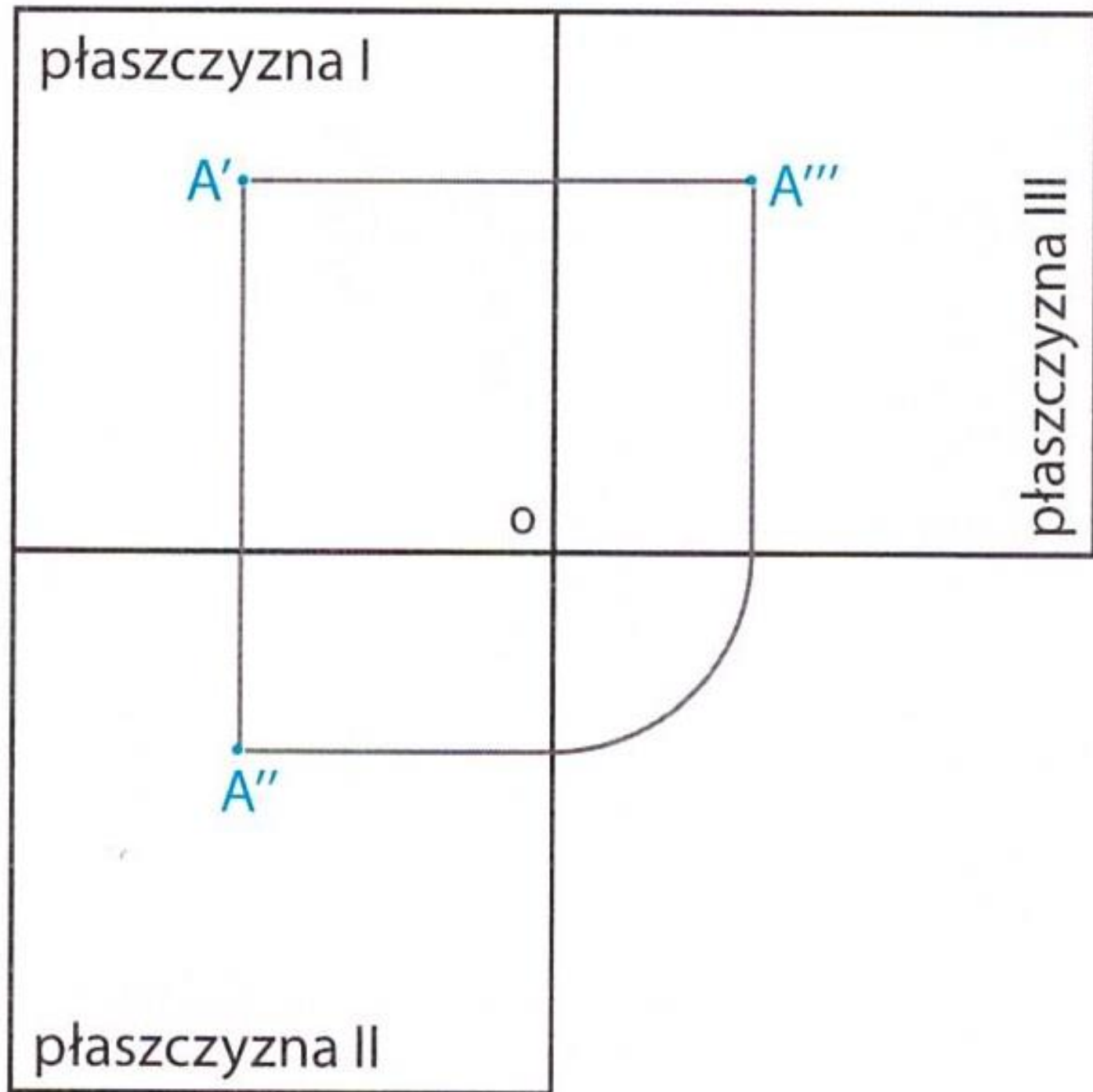


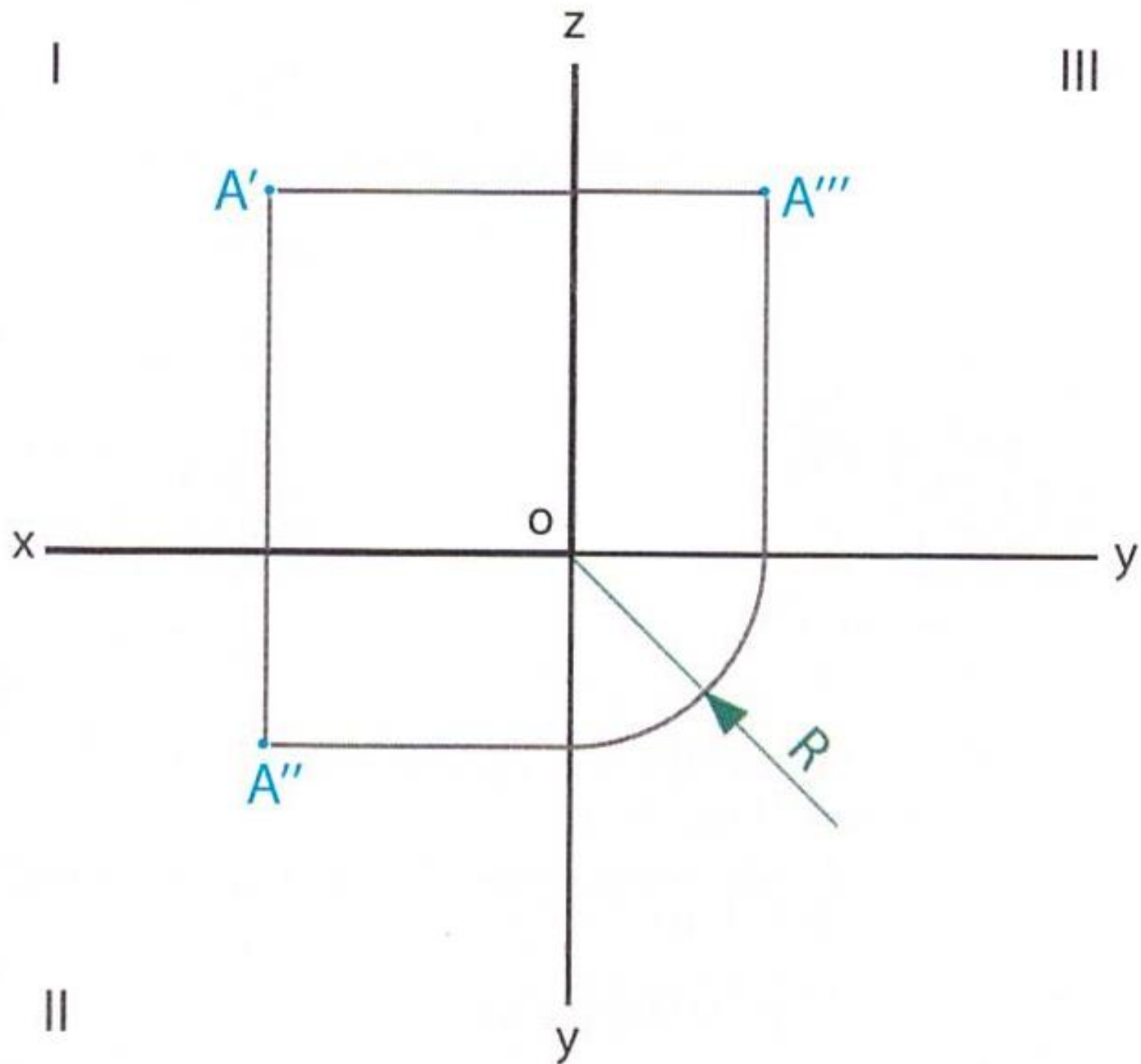


# Rzutowanie punktu

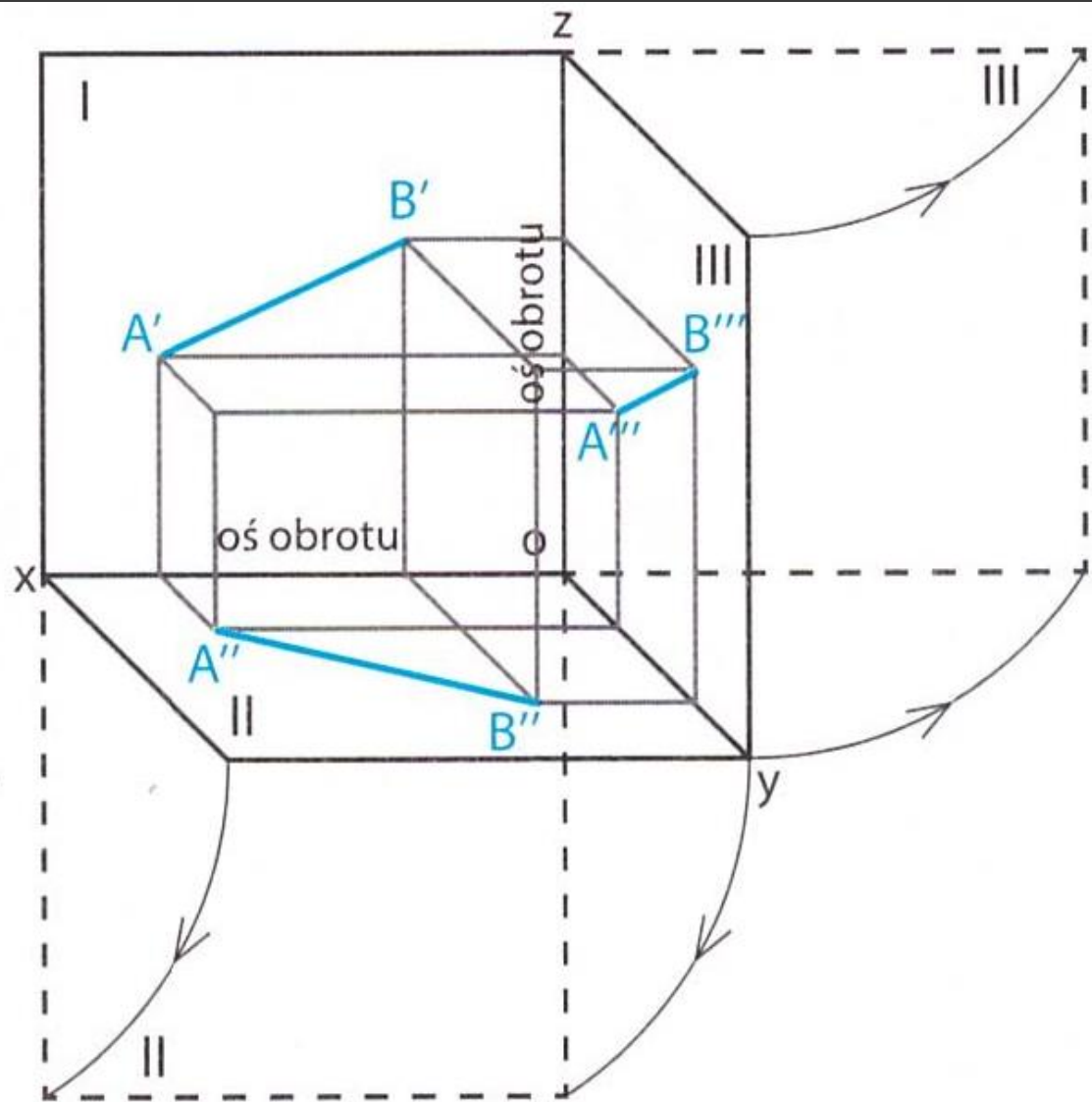
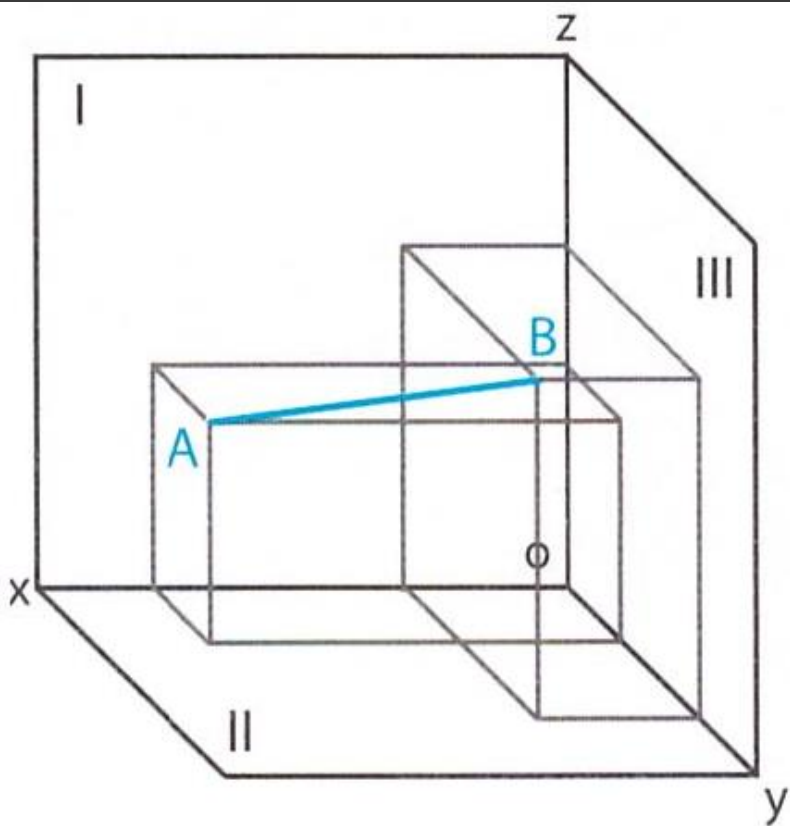


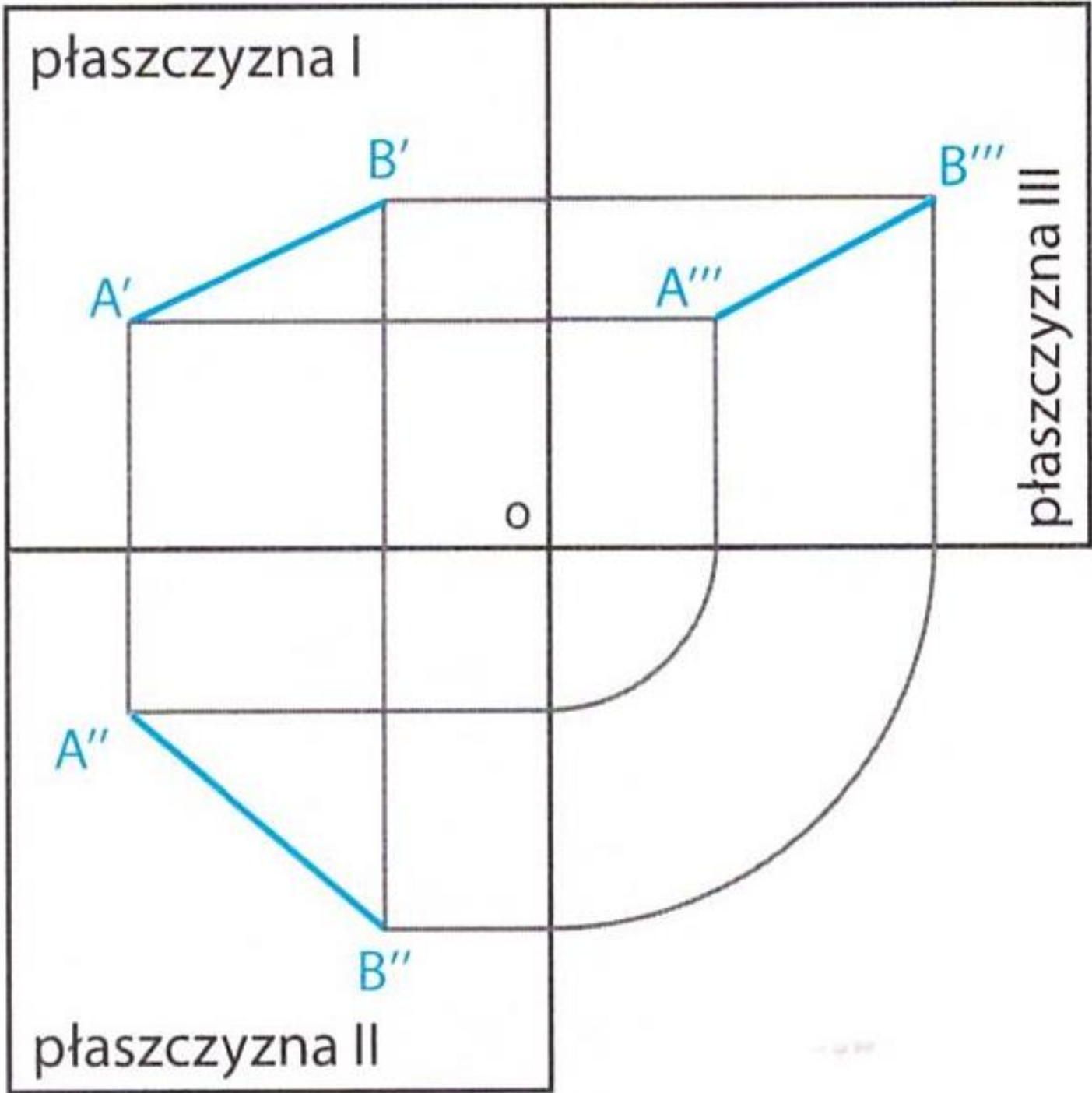






# Rzutowanie odcinka

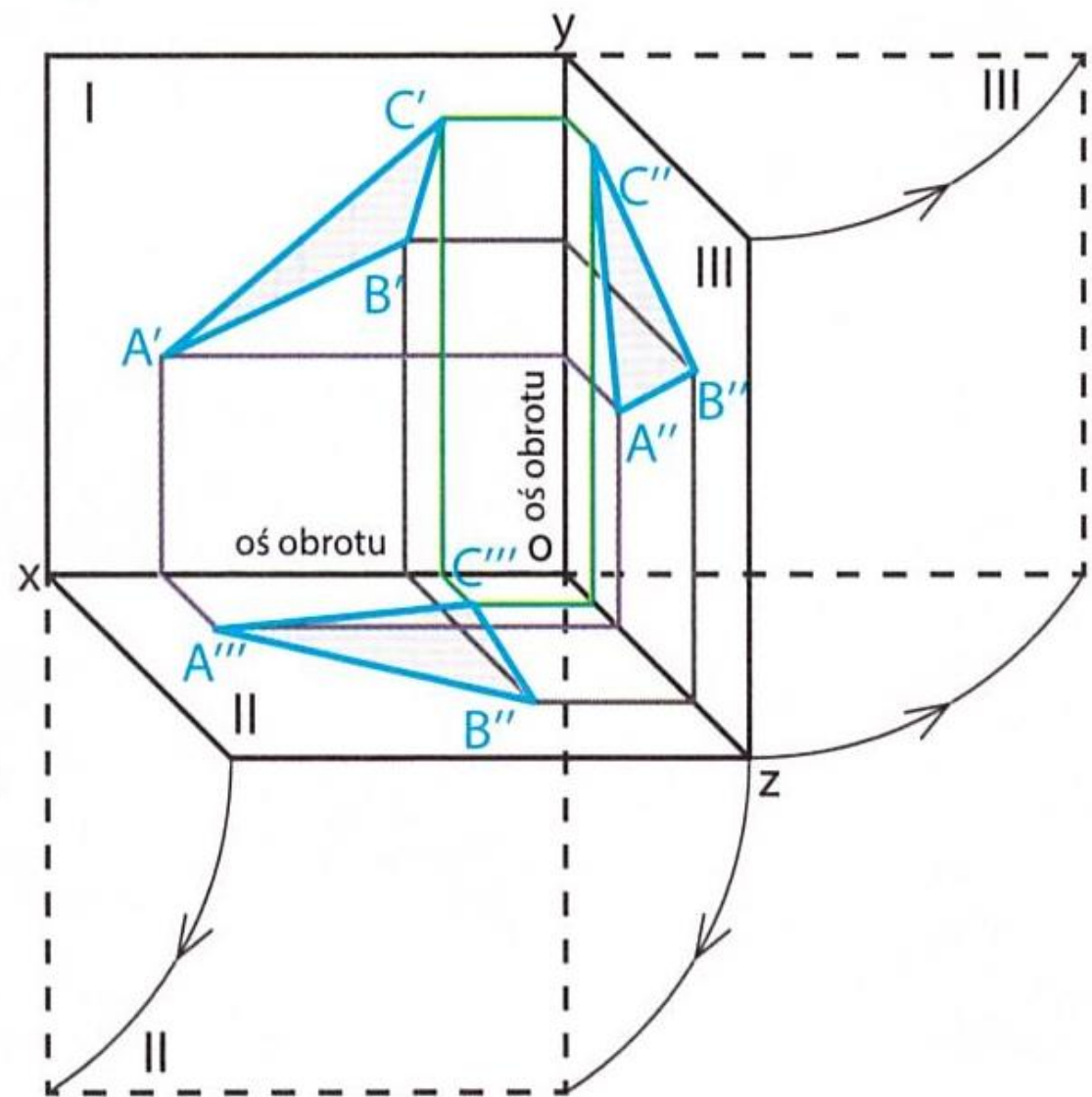
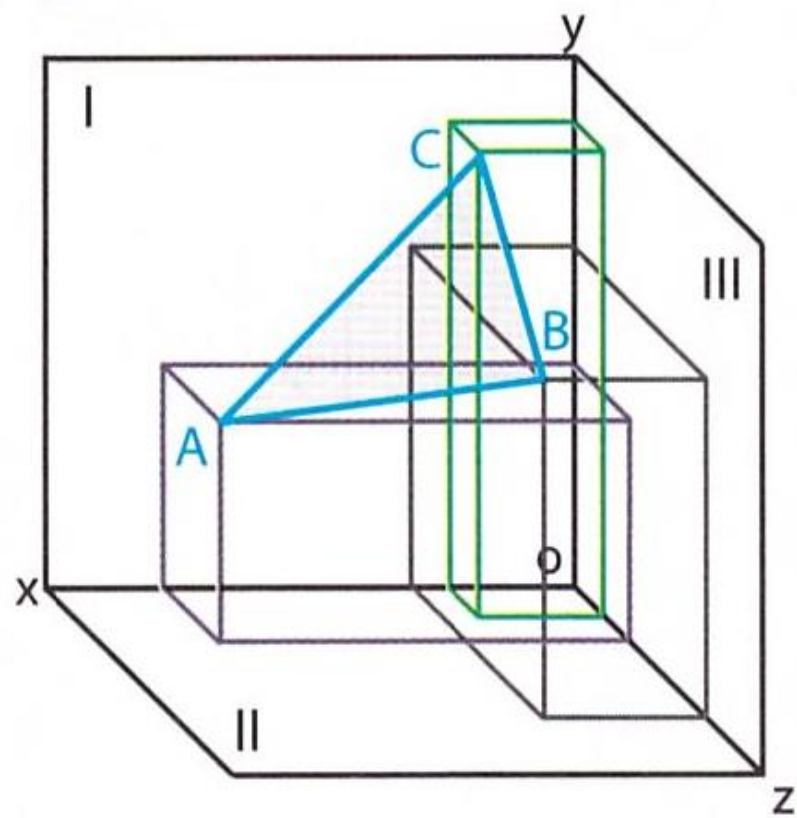


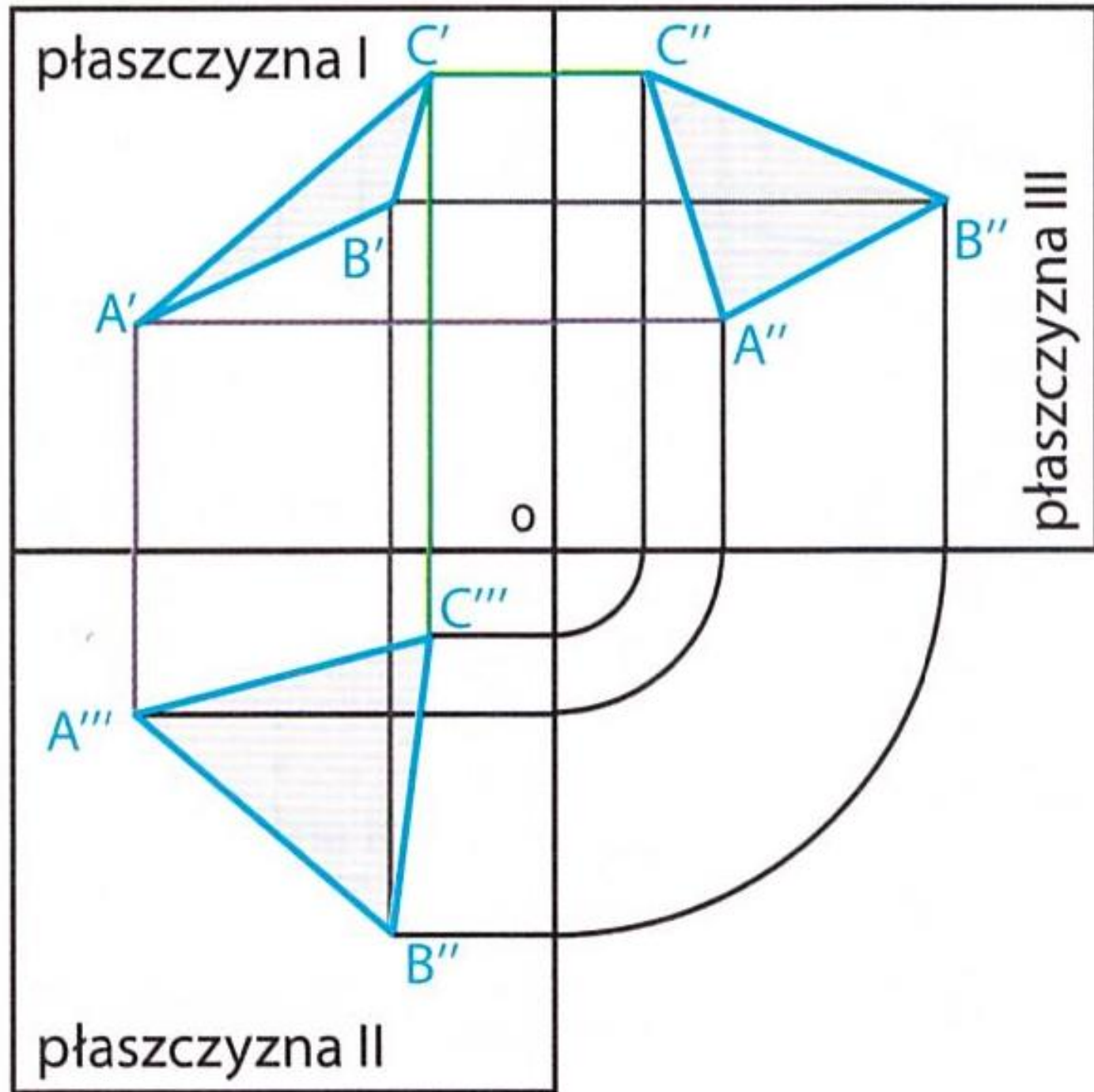


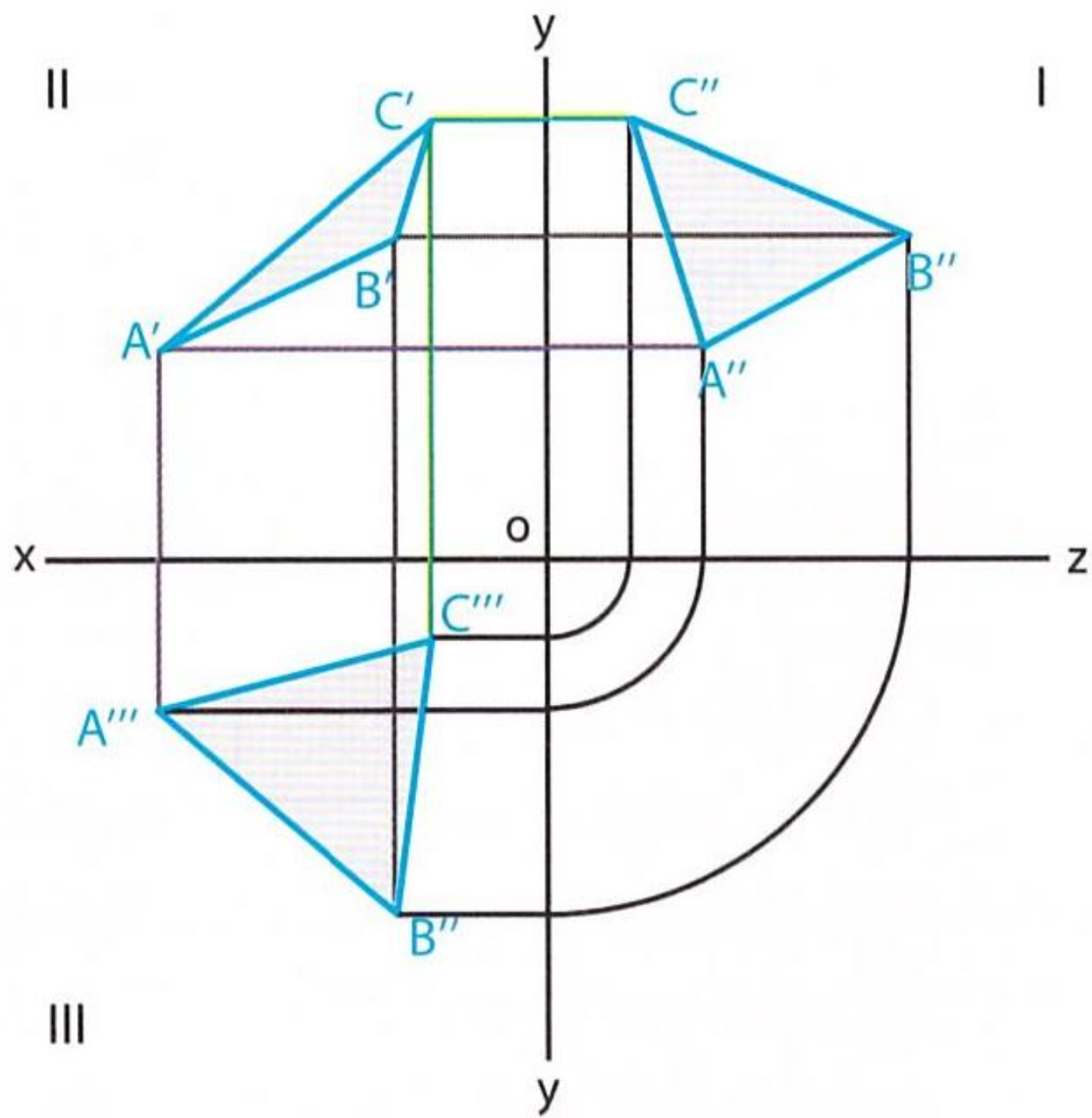


# Rzutowanie figur płaskich

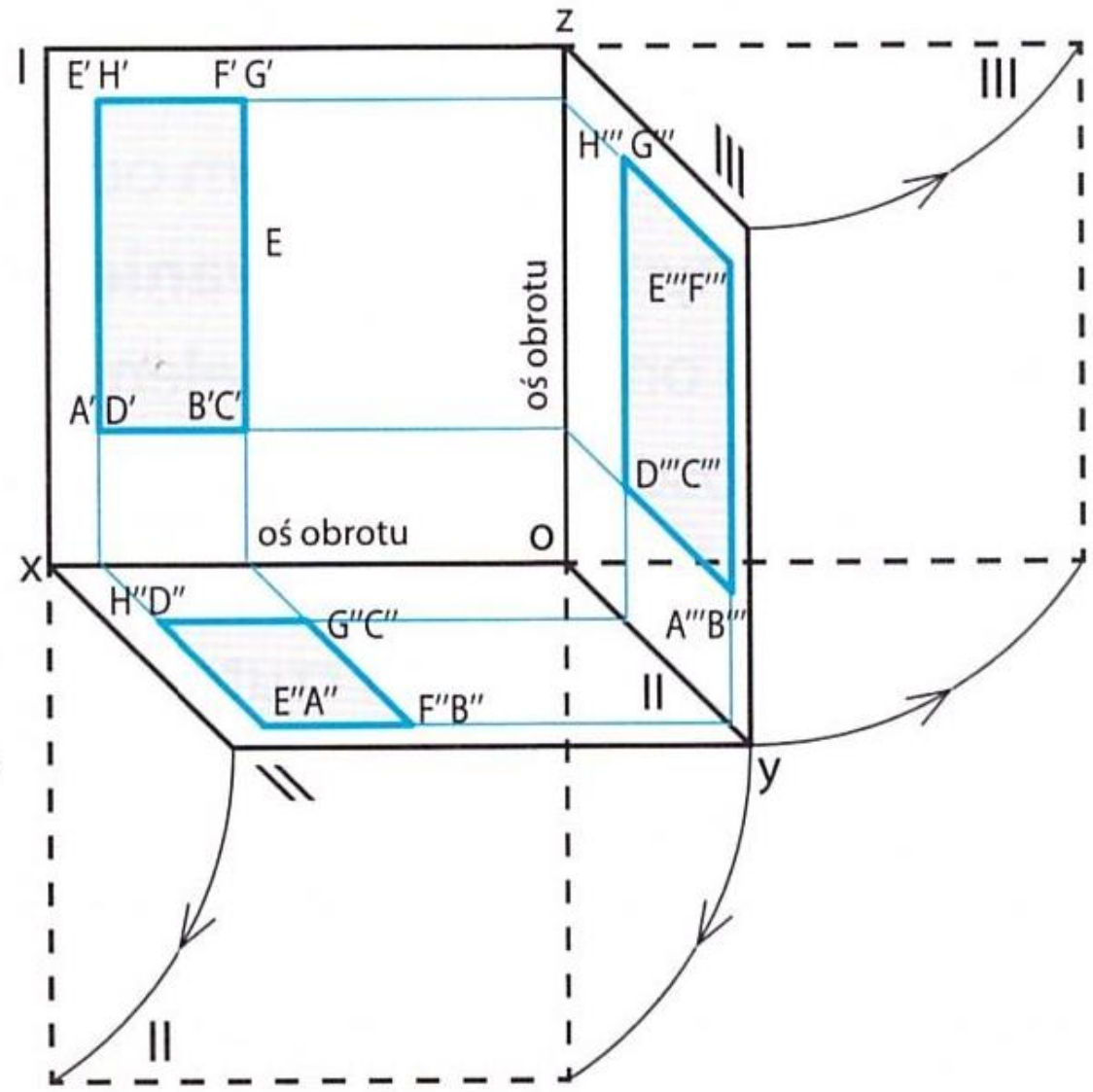
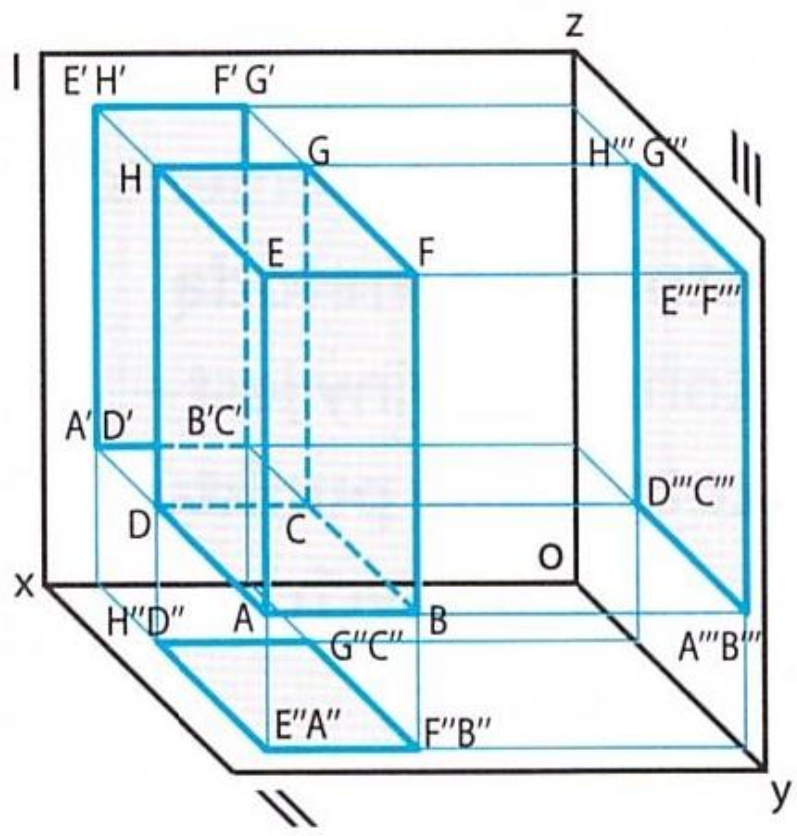


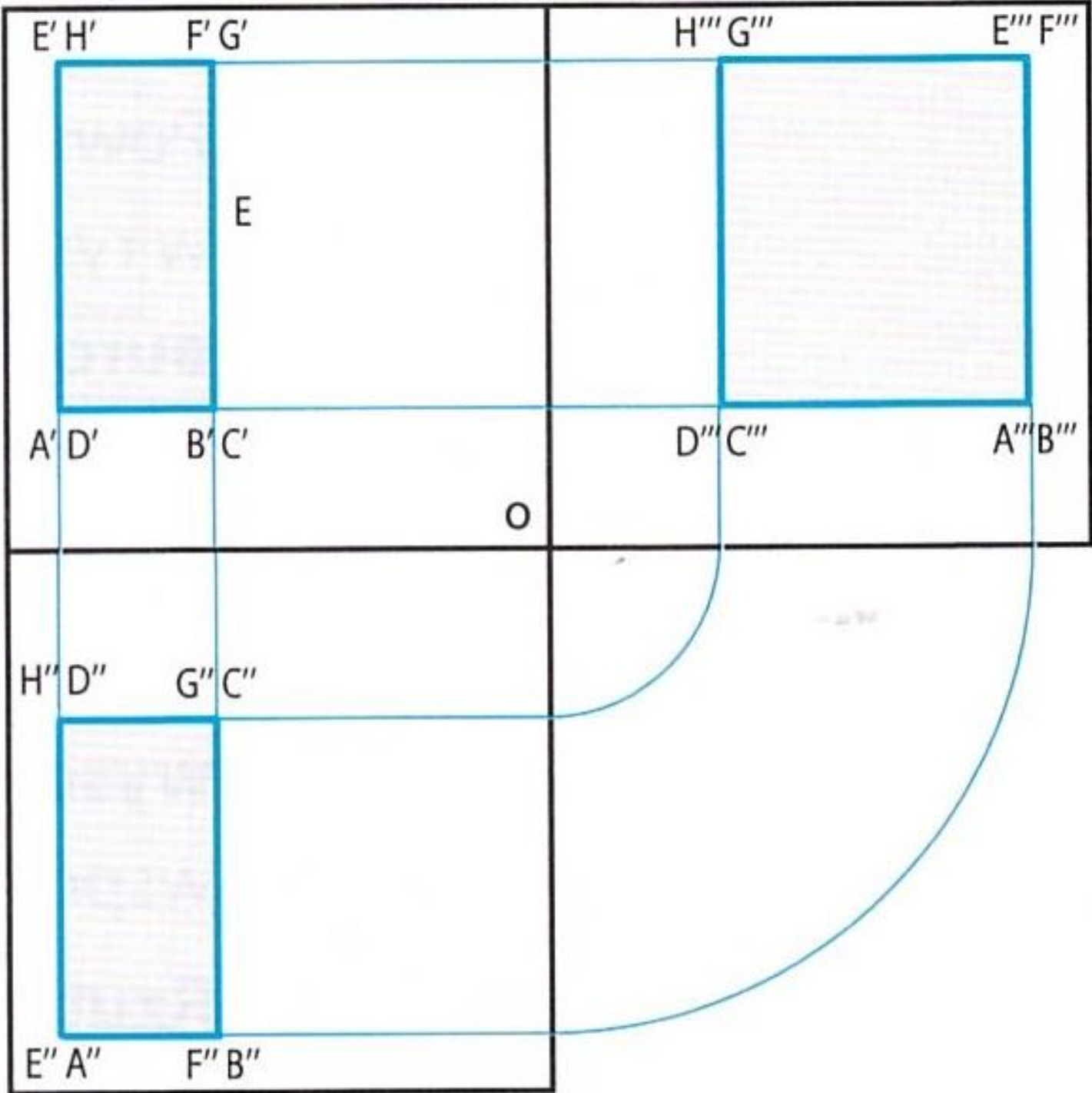




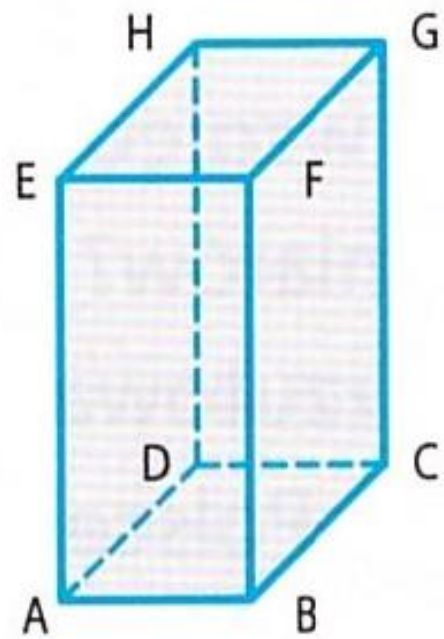
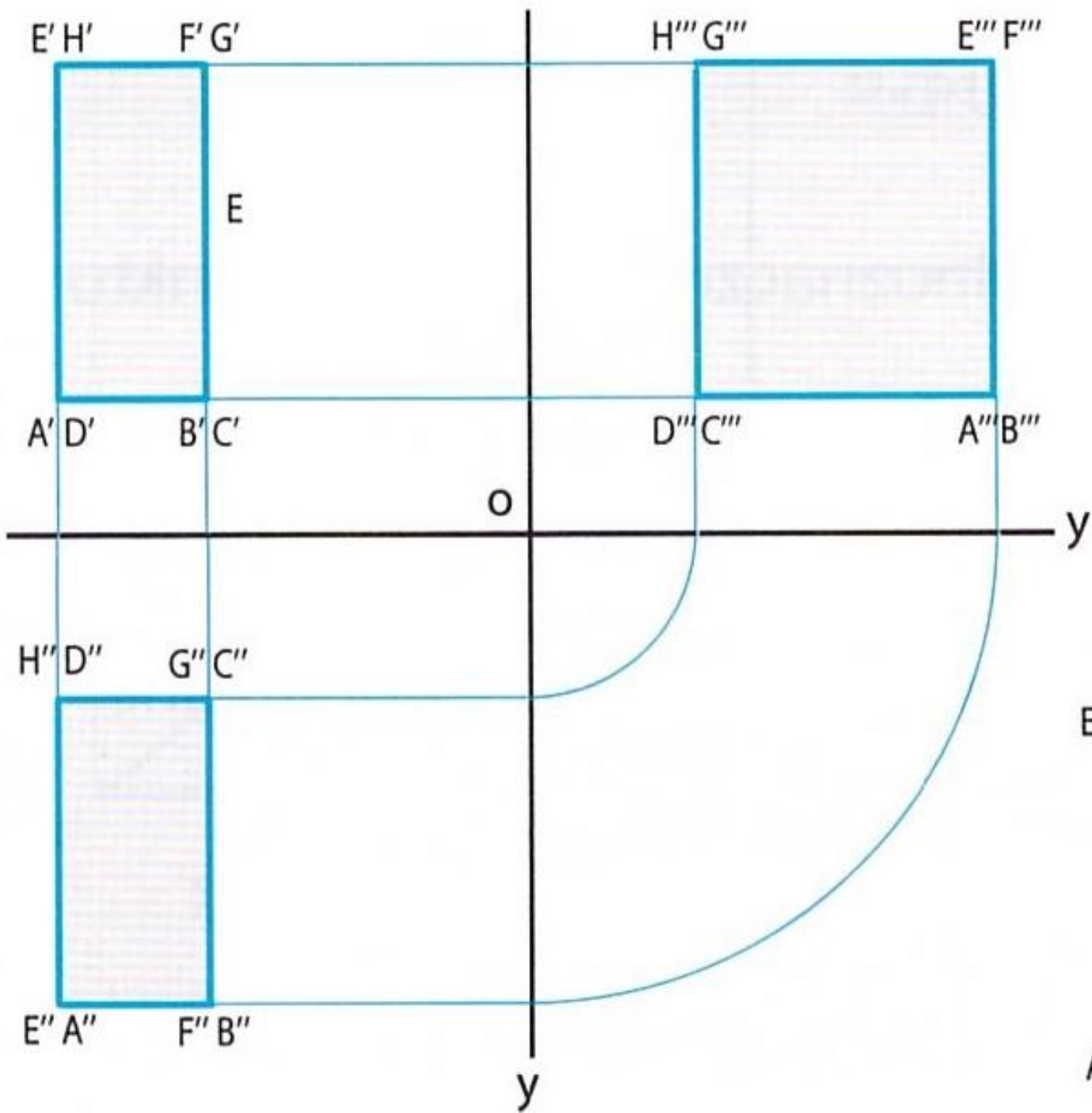


# Rzutowanie brył

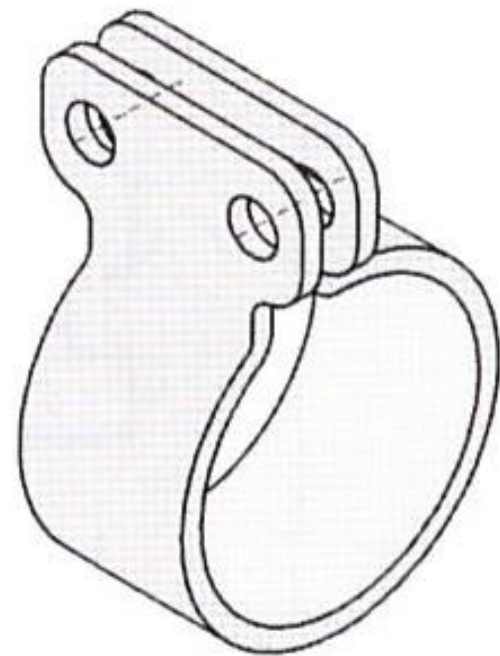
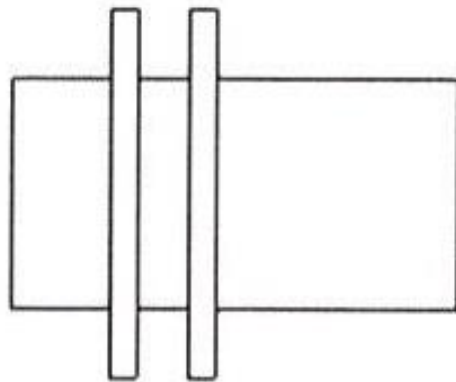
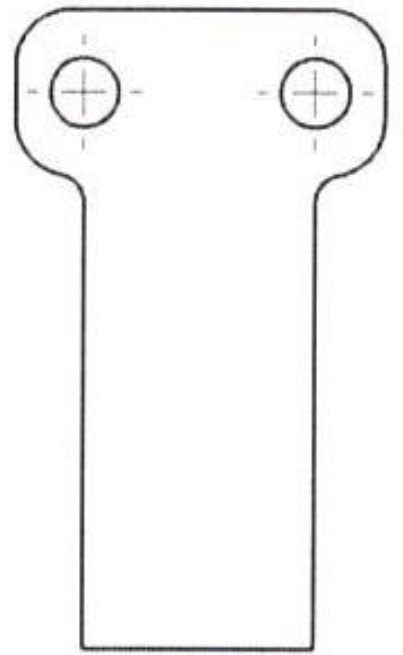
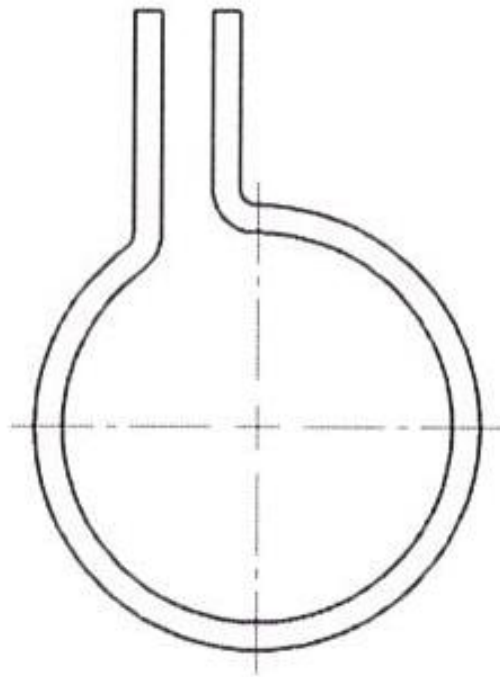


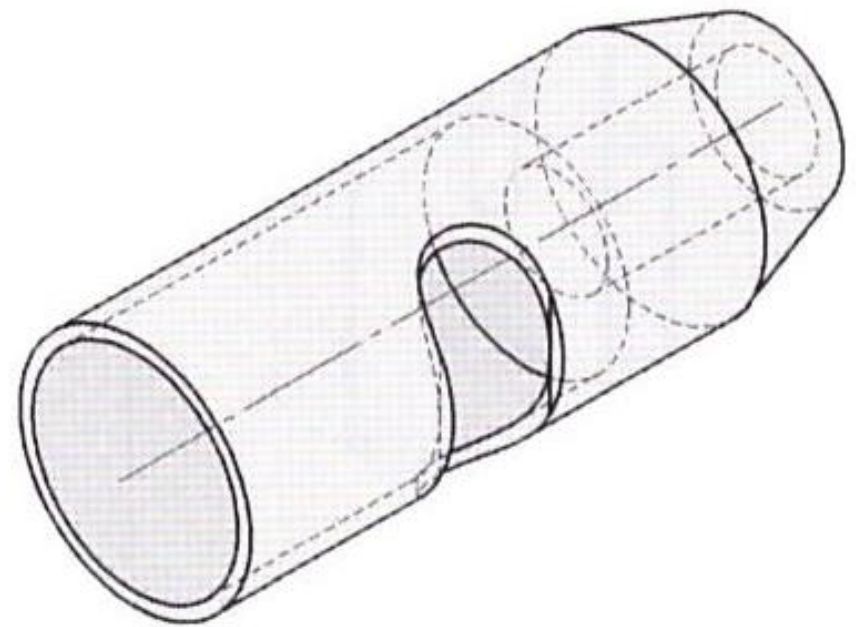
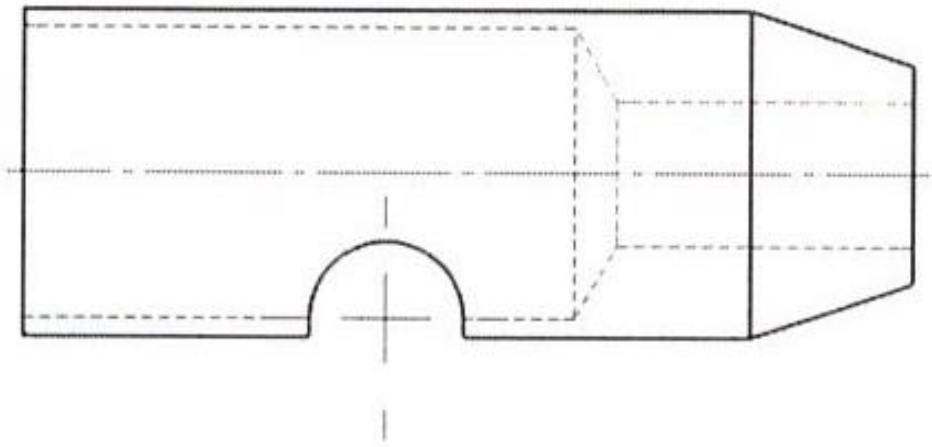
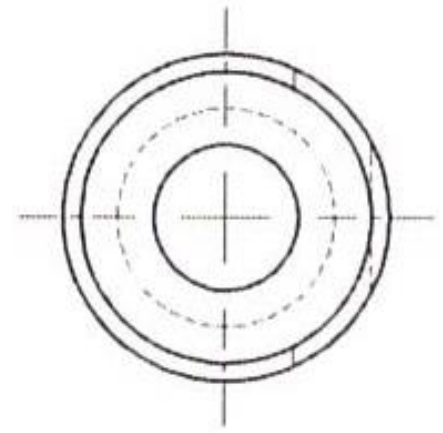
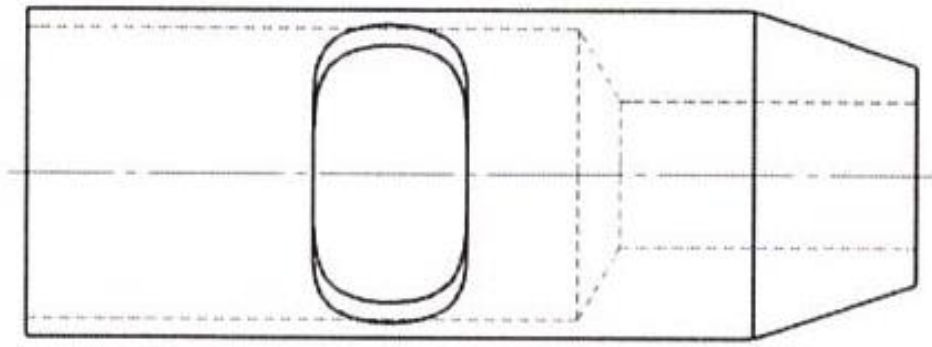




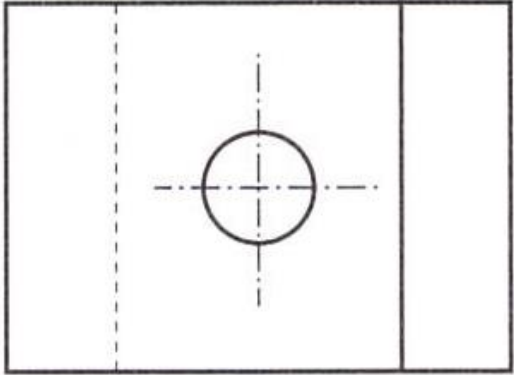




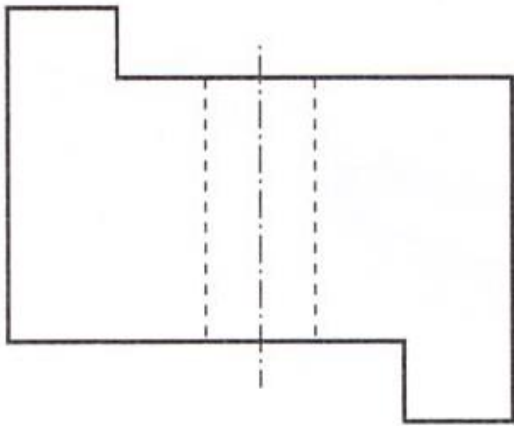




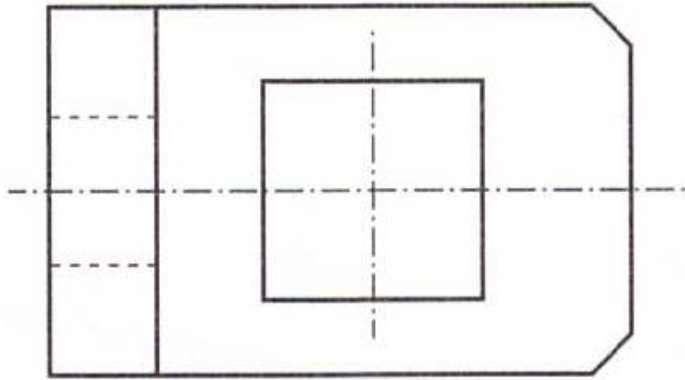
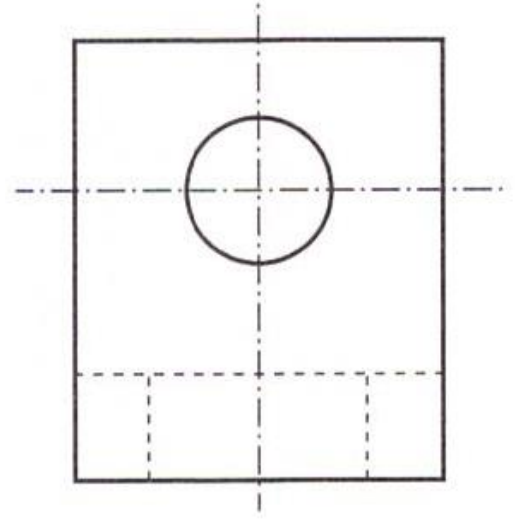
# Zadania

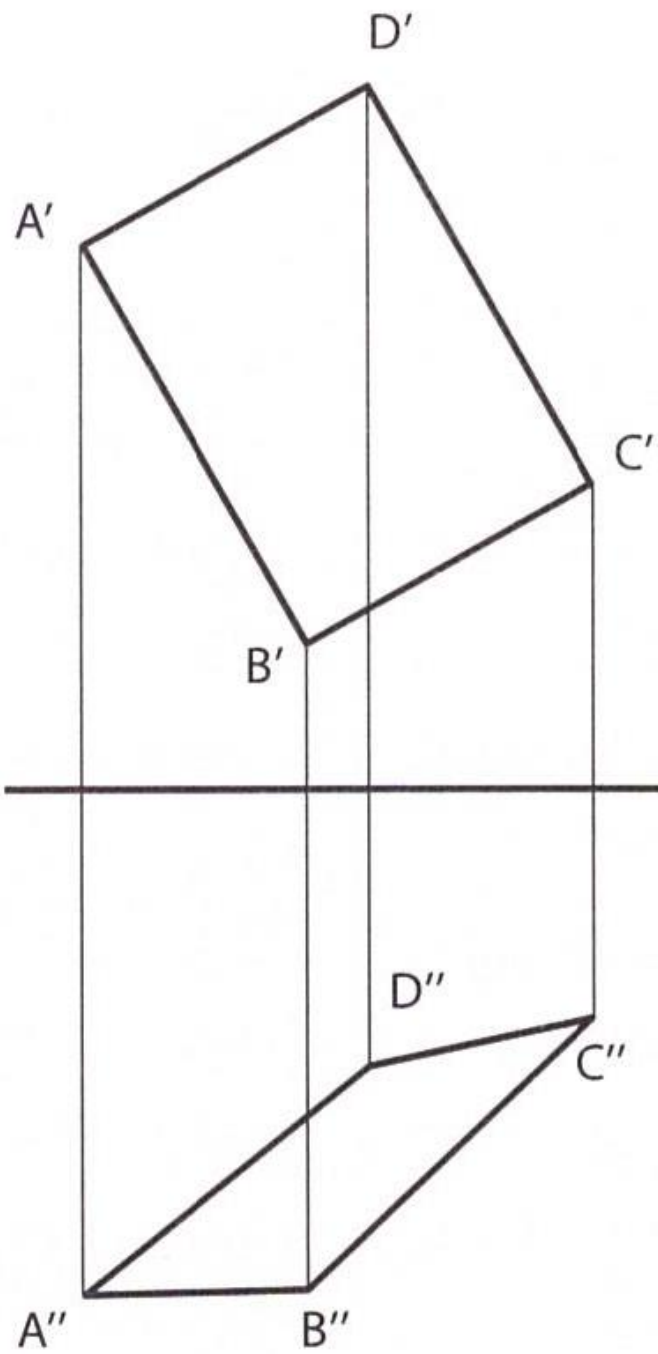


?



?





?



